

## INSIDE:

A New Web Interface  
for CPCUG.ORG E-mail  
Lists, 7

Technology News, 8

The Whole World in My  
Hand, 9

Rich's Ramblings, 10

Getting Started with a  
New PC, 11

Letters to "Late Nite," 12

Microletter #149, 13

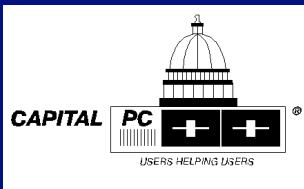
Book Review: *PHP and  
MySQL for Dynamic Web  
Sites*, 14

Browser Doochiekeys,  
Doodads & Gizmos, 15

and much more...

## CPCUG General Meeting TechTalks

CPCUG General Meeting TechTalks are held monthly, usually on the second Monday of the month. They are free to both members and non-members, but only members are eligible for door-prize drawings. Details about upcoming General Meeting TechTalks are on page 4.



# CPCUG Has A New Training Facility

The Capital PC User Group has established a new location for its computer training classes. Beginning this month, CPCUG once again has two training locations, one in Virginia and one in Maryland. But the location of the facility in Maryland is now in Montgomery County, at the offices of Montgomery Community Television (MCT) in Rockville, Maryland.

Montgomery Community Television is the public access cable TV agency serving Montgomery County. It has studios and offices in their building at 7548 Standish Place in an office park in the Derwood section of Rockville. (For directions, see the box at the end of this article, or go to [www.montgomerycommunitytv.com/location.html](http://www.montgomerycommunitytv.com/location.html) for more information.) The computer training classes will be held in the MCT classroom, which is located in MCT's auxiliary building, across the parking lot, at 7550 Standish Place. (The front entrances to the building at 7548 Standish Place are usually locked in the evenings and on weekends.)

CPCUG previously had used a training facility in Prince Georges County, at the Harmony Hall Regional Center in Fort Washington, Maryland. Late last year, however, problems developed in the relationship with the manage-

ment of the Regional Center, and CPCUG had to search for a new location. After several months of searching and negotiations, Past President Dennis Courtney was able to work out an arrangement with MCT for use of their classroom facilities.

This past March, Past President Courtney moved the computer equipment out of the Harmony Hall location to MCT, where Maryland Vice President Henry Whitney and Digital Video Special Interest Group Chairperson Merrill Hessel then spent a weekend setting up the computers, the classroom network, and an Internet connection.

In her capacity as the Interim Training Coordinator, Administrative Services Manager Karen Courtney developed a schedule of courses for the MCT facility starting this month, which can be seen in the calendar on page 18 and on the back cover of this issue. Those who are interested in signing up for any of the classes should contact Karen at [training@cpcug.org](mailto:training@cpcug.org), or call her in the CPCUG office during business hours at 301-762-9372.

Please note that the change in training locations also marks a change in the course fees for training classes. CPCUG has

continued on page 16



# Register to Take a CPCUG Training Class

Most classes cost:  
\$39-\$49 member fee  
\$49-\$59 non-member fee

Classes Listed at  
[www.cpcug.net/trainingsearch.asp](http://www.cpcug.net/trainingsearch.asp)

Click *SEARCH CLASSES* to search by location

Two Training Centers: Annandale, VA, and Rockville, MD

Register for classes at either location online at  
[www.cpcug.net/trainingsearch.asp](http://www.cpcug.net/trainingsearch.asp)  
or by calling the CPCUG Office at 301-762-9372.

# CPCUG Members Get Discounts at CFUNITED-05

*CFUNITED is the new name of the CFUN ColdFusion Web Developer Conference TeraTech and CPCUG have cooperated on since 1999.*

**CFUNITED-05** [www.cfunitied.com](http://www.cfunitied.com)

Wednesday to Friday, June 29 to July 1, 2005, 8:00 am to 7:00 pm  
Montgomery County Conference Center Bethesda North Marriott  
5701 Marinelli Road, North Bethesda, MD  
Metrorail: White Flint Subway (across the street)

---

***“Best courses, best learning, best timing, best networking, best price — best meeting. Period.”***

—Jeremy Ridout, *CFUN Conference Attendee*

---

## **Seven Tracks During 3 Days** (*More than 50 speakers offering more than 60 sessions*)

- **Boot Camp**—Basic ColdFusion, Flash, and SQL
- **Advanced Topics**—Event gateways, Java integration, Web services, and security
- **Manager/Empowered Programming**—Fusebox, project management topics, FliP, and Mach-III
- **Integration**—Flash, Flex, and Dreamweaver
- **Accessibility/Usability**—Web sites that work for those with disabilities, usability testing, and search engine optimization
- **Deployment/Platform**—OS, installation, scaling, tuning, database issues
- **CFML, .NET, and Windows**—SQL Server optimization, software development for Pocket PCs, BlueDragon integration

## **And More**

- Keynote Addresses
- “Birds of a Feather” Sessions
- Panel Discussions

## **Extra Events Before the Conference**

- Monday, June 27, and Tuesday, June 28: **Special Hands-On Day-Long Classes** (\$349 each) [Bring your own laptop]
- Tuesday, June 28: **Macromedia User Group (MMUG) Manager/Team Macromedia Conference**

*Note:* Separate online registrations for June 27 and June 28 events are required

***CFUNITED: More Days, More Sessions, More Speakers, Better Venue, More Extra-Curricular Activities, More Networking Opportunities***

**CPCUG Member Discount:** **CPCUG members** get a **\$50 discount** for CFUNITED-05.

To get the discount, you must insert a code in the online registration form.

*To get the discount code, call the CPCUG office at 301-762-9372 during business hours.*

**Conference Fee for CFUNITED-05:**

- Now \$649
- After June 10 \$749
- At the door \$849

***Register online now!*** [www.cfunitied.com](http://www.cfunitied.com)

*Registration Stats:* 457 have registered as of April 27, 2005. (More than 1,000 attendees are expected)

## CPCUG Office

### Capital PC User Group, Inc.

19209 Mt. Airey Road  
Brookeville, MD 20833

**E-mail:** [admin@cpcug.org](mailto:admin@cpcug.org)

**Phone:** 301-762-9372

**Fax:** 301-762-9375

### CPCUG Home Page

[www.cpcug.org](http://www.cpcug.org)

**Get more  
out of your  
membership  
in the  
Capital PC  
User Group—  
Become a  
VOLUNTEER!**

Contact a member of  
CPCUG's Board of  
Directors — all are listed on  
this page. Most offer a choice  
of e-mail or phone contact  
information.



APCUG Region 2 Advisor and  
CPCUG APCUG representative:  
Gabe Goldberg, O: 703-204-0433  
[gabe@gabegold.com](mailto:gabe@gabegold.com)

### Past Presidents

Dennis Courtney, 2001–04  
Scott Mohnkern, 1999–2000  
Lillian Milliner, 1997–98  
Greg Smith, 1996  
Rich Schinnell, 1993–95  
Eydie DeVincenzi, 1993  
Stan Doore, 1992  
Henry Noble, 1991  
Irv Samuels, 1989–90  
Tom Enrico, 1988  
Jerry Schneider, 1986–87  
Tom Mack, 1985  
Don Withrow, 1984  
Larry Jordan, 1983  
Mike Todd, 1982

## CPCUG Board of Directors

### Executive Committee

#### President

Frank Sokolove  
VM: 202-298-0800  
[frank\\_sokolove@yahoo.com](mailto:frank_sokolove@yahoo.com)

#### DC Vice President

Cliff Bailey  
703-237-7486  
[cbailey@myexcel.com](mailto:cbailey@myexcel.com)

#### Virginia Vice President

Robert Simanski  
703-404-8665  
[rsimanski@yourpubpro.com](mailto:rsimanski@yourpubpro.com)

#### Maryland Vice President

Henry Whitney  
301-926-4818  
[whitmvm@comcast.net](mailto:whitmvm@comcast.net)

#### 1st Vice President

Vacant

#### Treasurer

Dennis Courtney  
O: 202-623-2884  
[dennisc@iadb.com](mailto:dennisc@iadb.com)

#### Secretary

Ann Dorsey  
O: 301-762-9372  
[adorsey@cpcug.org](mailto:adorsey@cpcug.org)

#### Past President

Dennis Courtney  
O: 202-623-2884  
[dennisc@iadb.com](mailto:dennisc@iadb.com)

#### Build or Buy Program

Chip Dodge  
H: 703-425-7038  
[cdodgemd@aol.com](mailto:cdodgemd@aol.com)

#### Buying Group

Chip Dodge  
H: 703-425-7038  
[cdodgemd@aol.com](mailto:cdodgemd@aol.com)

#### Community Services

René Thirion  
H: 703-256-6764  
[rene@renedc.com](mailto:rene@renedc.com)

#### Corporate Communications

Barbara Conn  
O: 202-508-1494  
H: 202-452-7428  
[bconn@cpcug.org](mailto:bconn@cpcug.org)

#### Education and Training

Karen Courtney  
O: 301-762-9372  
[training@cpcug.org](mailto:training@cpcug.org)

#### Helpline Coord.

Henry Whitney  
301-926-4818  
[helpline@cpcug.org](mailto:helpline@cpcug.org)

#### Internet Services

Mark Leymaster  
O: 301-495-4877  
[isd@cpcug.org](mailto:isd@cpcug.org)

#### Library Services

Marilyn Weinstein  
[marilynweinstein@juno.com](mailto:marilynweinstein@juno.com)

#### Marketing & Public Relations

Vacant

#### Membership

Dennis Courtney  
O: 202-623-2884  
[dennisc@iadb.com](mailto:dennisc@iadb.com)

#### MIX

René Thirion  
H: 703-256-6764  
[rene@renedc.com](mailto:rene@renedc.com)

#### Monitor Editor

James Katz  
O/H: 301-951-8917  
[editor@cpcug.org](mailto:editor@cpcug.org)

#### Outreach

Gabe Goldberg  
O: 703-204-0433  
[gabe@gabegold.com](mailto:gabe@gabegold.com)

#### Program

Gabe Goldberg  
O: 703-204-0433  
[gabe@gabegold.com](mailto:gabe@gabegold.com)

#### Science Fair Coord.

Walter Houser  
[houserw@cpcug.org](mailto:houserw@cpcug.org)

#### Software Library

Vacant

#### Vendor Relations

Vacant

#### Volunteers

Vacant

To volunteer, contact  
[frank\\_sokolove@yahoo.com](mailto:frank_sokolove@yahoo.com)

### Appointed Directors

### Special Interest Groups (SIGs)

#### Access (MS)

David Kiasi  
O: 301-350-4752  
[David.Kiasi@appalt.com](mailto:David.Kiasi@appalt.com)

#### ACT!

Rick Shaddock  
O: 202-829-4444  
[Rick@CICorp.com](mailto:Rick@CICorp.com)

#### Beginners (and Beyond)

Marty Shinko  
O/H: 301-253-1743  
[mshinko.cpcug@juno.com](mailto:mshinko.cpcug@juno.com)

#### Clipper

Naseem Saab  
H: 703-713-6900  
[Naseem\\_Saab@DPS-Consulting.com](mailto:Naseem_Saab@DPS-Consulting.com)

#### Delphi

Thomas Miller  
703-503-5600  
[tmiller@bss-software.com](mailto:tmiller@bss-software.com)

#### Digital Video

Merrill M. Hessel  
301-840-1258  
[dvug@meral.com](mailto:dvug@meral.com)  
[www.dvug.org](http://www.dvug.org)

#### Entrepreneurs and Consultants

Barbara Conn  
O: 202-508-1494  
H: 202-452-7428  
[bconn@cpcug.org](mailto:bconn@cpcug.org)

#### GLITCH DC

Cliff Bailey  
703-237-7486  
[cbailey@myexcel.com](mailto:cbailey@myexcel.com)

#### Investment

Andy Thompson  
H: 301-270-6790  
[thompson01@erols.com](mailto:thompson01@erols.com)

#### Microsoft Office

Marie Parker  
O: 301-897-5700,  
X4220  
[Mparker@ASHA.org](mailto:Mparker@ASHA.org)

#### PalmOS

Frank Sokolove  
VM: 202-298-0800  
[frank\\_sokolove@yahoo.com](mailto:frank_sokolove@yahoo.com)

#### Pocket PC

Ray Wiley  
O: 703-682-5325  
H: 703-878-0314  
M: 703-819-1656  
[rainman@gokatgo.net](mailto:rainman@gokatgo.net)

#### Robotics

Janet Lathan  
240-393-1464  
[janetlathan@comcast.net](mailto:janetlathan@comcast.net)

#### Seniors

Paul Shapiro  
240-643-8729  
[paul.shapiro@gmail.com](mailto:paul.shapiro@gmail.com)

#### Statistics

Charles Hallahan  
O: 202-694-5051  
H: 703-532-2930  
[hallahan@ers.usda.gov](mailto:hallahan@ers.usda.gov)

#### Virginia

Luis Garcia  
O: 202-606-9848  
H: 703-425-6902  
[lgarcia51@yahoo.com](mailto:lgarcia51@yahoo.com)

#### Future SIGs

If you're interested  
in starting a SIG,  
please contact  
CPCUG President  
Frank Sokolove at  
[frank\\_sokolove@yahoo.com](mailto:frank_sokolove@yahoo.com)

The Internet SIG is  
inactive. If you're  
interested in helping  
reactivate this  
important SIG,  
please contact Gabe  
Goldberg at [gabe@gabegold.com](mailto:gabe@gabegold.com).

*CPCUG is looking for a few good men – and women. Can you donate a few hours each week to help improve our group? Call 301-762-9372!*

May 2005

**Monitor** is your publication. If you would like to discuss an idea for an article or column, please contact the editor at [editor@cpcug.org](mailto:editor@cpcug.org).

Our style guide can be found at: [www.cpcug.org/user/monitor/Monstyle.html](http://www.cpcug.org/user/monitor/Monstyle.html).

## Publication Submissions

**Guidelines.** Be sure to put each graphic (200-dpi TIF format preferred) and table in a separate file—do not include text, graphics, and tables together in one file. If you prefer to include everything in one file, please send each table and graphic separately in addition. Include your name, e-mail address, and day and evening telephone numbers at the top of your article so we can contact you if we have questions.

**Submittal.** Send articles as file attachments (.doc (Word) or .rtf) to [editor@cpcug.org](mailto:editor@cpcug.org), with copy to [admin@cpcug.org](mailto:admin@cpcug.org). In the body of your message, include the names of files attached and the software formats of each. Or you may send articles in ASCII text format directly in the body of an e-mail message.

**Conditions.** Articles must be received at least 30 days before publication. All articles are subject to editing. Articles accepted for publication in the print version of the **Monitor** will also appear in the Internet Web pages of the **Monitor**.

### Subscription Problems?

Please call 301-762-9372 or send an e-mail message to [admin@cpcug.org](mailto:admin@cpcug.org).

**Address Changes.** Please send change of address notices with current phone numbers to the Capital PC User Group, Attn.: Membership Director, 19209 Mt. Airey Road, Brookeville, MD 20833, or via e-mail to [admin@cpcug.org](mailto:admin@cpcug.org). **Monitor** is not forwarded unless you have made special arrangements with your Post Office.

**Renewals.** One renewal notice is sent. You may renew your membership by sending your check for \$42 (\$78 for 2 years; \$110 for 3 years) along with your mailing label to the address above. Be sure to correct your mailing label if any of the information has changed, and always include your current phone numbers and membership number.

May 2005. **Monitor** (ISSN 1070-2792) is published periodically by the Capital PC User Group, Inc., 19209 Mt. Airey Road, Brookeville, MD 20833. Membership is \$42 (\$78 for 2 years; \$110 for 3 years), or \$60 per year for overseas members. Overseas members should make their checks or money orders payable to CPCUG in U.S. funds, drawn on a U.S. bank. Postage paid at Gaithersburg, MD. POSTMASTER: Send address changes to **Monitor**, Capital PC User Group, 19209 Mt. Airey Road, Brookeville, MD 20833.

## Articles

### Cover CPCUG Has A New Training Facility

7 A New Web Interface for CPCUG.ORG E-mail Lists  
by Karl Signell

8 Technology News Review by Sue Crane

9 The Whole World in My Hand by Tom Gutnick

10 Rich's Ramblings by Rich Schinnell

11 Bringing Home Baby - Getting Started with a New PC  
by Gabe Goldberg

13 Microletter #149 by Paul Shapiro

14 Book Review: *PHP and MySQL for Dynamic Web Sites: Visual QuickPro Guide* by Tom Gutnick

15 Browser Doochicks, Doodads & Gizmos by Vinny La Bash

## Departments

- 5 President's Notes
- 5 Internet Services Director's Report
- 6 Feedback/Editor's Column
- 12 Letters to "Late Nite"
- 29 Helpline Listings

## Events

- 4 General Meeting TechTalks
- 18 Calendar of Events
- 25 Special Interest Group (SIG) Listings
- Back Training Classes Schedule
- Cover

## More Bytes

- 35 CPCUG E-Mail Lists
- 36 Membership Form

## Addresses, Directions, Maps, Phone Numbers, Classes

- 34 Washington Gas, Springfield, VA
- cover 3 CPCUG Meeting Site Abbreviations and Addresses
- back cover CPCUG Training

**The Fine Print.** Unless specifically stated otherwise, the opinions expressed in any article or column are those of the individual author(s) and do not represent an official position of, or endorsement by, the Capital PC User Group. CPCUG is an independent, nonprofit user group and is not affiliated in any way with any vendor or equipment manufacturer.

**Copyright** ©2005 by the Capital PC User Group, Inc. All rights reserved. Permission for reproduction in whole or in part is hereby granted to other nonprofit and computer user groups for internal, nonprofit use, provided credit is given to **Monitor** and to the author(s) of the reproduced material, and attribution of copyright is included. All other reproduction without the prior written permission of the Capital PC User Group is prohibited.

## Staff

### Editor

James Katz  
[editor@cpcug.org](mailto:editor@cpcug.org)

### Contributing Editors

Tom Gutnick, Mark Leymaster,  
Rich Schinnell, Paul Shapiro,  
Marty Shinko, Frank Sokolove,  
Henry Whitney

# Monitor

### Editorial Support/ Proofreading

Tom Gutnick

### Product Review Coordinator

[editor@cpcug.org](mailto:editor@cpcug.org)

### Photographer

Vacant

### Helpline Coordinator

Henry Whitney  
[helpline@cpcug.org](mailto:helpline@cpcug.org)

### Business Manager/ Advertising Sales

[admin@cpcug.org](mailto:admin@cpcug.org)  
301-762-9372

### Editor Emeritus

Susan Kousek



# CPCUG News & Events

## General Meeting TechTalk Locations and Times

CPCUG General Meeting Tech Talks are held in Northern Virginia at Washington Gas in Springfield, or in Washington, DC, at the Martin Luther King Library. Directions to the current month's location are on page 34. General Meeting TechTalks held at Washington Gas begin at 7:00 pm. Those held at the Martin Luther King Library begin at 6:30 pm.

## Two Training Locations!

**Annandale, VA**  
**UHU (Users Helping Users)**

*Classroom: 12 PCs on a LAN*  
Annandale United  
Methodist Church  
Room 305  
6935 Columbia Pike  
Annandale, VA 22003

**Rockville, MD**  
**MCT (Montgomery  
Community Television)**

Training Classroom  
7548 - 7550 Standish Place  
Rockville, MD 20855

**To register for classes, call**  
**301-762-9372**

Directions to the sites:  
[www.cpcug.net/directions.asp](http://www.cpcug.net/directions.asp)  
[www.cpcug.org/user/comm/  
location.html#mct](http://www.cpcug.org/user/comm/location.html#mct)

## Upcoming General Meeting TechTalks

Meeting location may vary; please check below

For up-to-the-minute details on General Meeting TechTalks, check CPCUG's Web site: [www.cpcug.org/user/comm/gen-meet.html](http://www.cpcug.org/user/comm/gen-meet.html).

### Monday, May 9 (7:00 pm)

- A. Topic:** Student Science Fair Awards  
**Speakers:** Walt Houser, CPCUG Science Fair Coordinator, and Frank Sokolove, CPCUG President
- B. Topic:** Gaming  
**Speaker:** David Mayer and Robert Clemenzi, computer systems experts and CPCUG members

An action-packed double feature!

First, a variety of metro area high school students will present an array of technology-related exhibits at CPCUG's Annual Science Fair and receive awards from our new President, Frank Sokolove. The students' exhibits will be available for viewing by the public in the meeting room before the meeting begins, starting around 6:30 pm.

Second, there will be an exciting presentation on Gaming by David Mayer and Robert Clemenzi. Their presentation will focus on gaming technology (processors, graphics cards, memory), with a brief talk about where gaming is going (realism, better online play, etc), and will include a live, interactive demo of specific games. They will also engage the audience in discussing future trends in online play, increasingly tight interactivity between players (i.e. adding speech, etc), and improving realism.

**Location:** Washington Gas  
6801 Industrial Road, Springfield, VA  
**Directions:** Industrial Road is in the Shirley Industrial Park. It meets Backlick Road between the Beltway and Edsall Road.

See page 34 for detailed directions.

**For More Information:** Check the CPCUG web site, or contact Program Director Gabe Goldberg at [gabe@gabegold.com](mailto:gabe@gabegold.com). Suggestions for future Tech Talk topics are always welcome.

# President's Notes

Just in case I didn't say so last month, I appreciate being in the middle of this organization, and being able to work with some talented, dedicated folks on the Board of Directors, serving the larger organization. We work, we have fun, and we get things done. Most of the time.

We have a lot going on, some of it in the beginning stages, and that's a good thing.

The web site Portal looks great. Have you seen it lately? Membership has its benefits, by the way, and that is one of the easily seen items on the portal. I wonder why we don't have more members? We need more, and we're making efforts at getting new members. They are the lifeblood of the organization; when we have more, we can afford to provide more benefits.

A large percent of our member base (sixty percent or so) live in Maryland. Things are going on in Montgomery County: Dennis Courtney has been talking for the last year or so about having a role in the county fair. Now we are talking seriously about having a presence at the fair and bringing technology to the fair. We can expect to get more members as a result of that presence.

We have a new arrangement for training: we have established a working relationship with Montgomery Community Television (MCT). This will be a mutual-benefit arrangement.

We are looking at our business model and our general way of doing things: we have the services of one Jim Whelan, consultant and coach to business, who will guide us in developing this business enterprise of ours (CPCUG itself) and helping it to become more successful.

We have a winner from the Science Fair, who will be joining us at our June General Meeting. He won at the International Science Fair. I think he will have a lot to teach us.

Mark Leymaster, our very competent Internet Services Director, is working on the challenging and complicated situation with our ISP. We hope to have some answers soon. His comments can be found at the bottom of this page.

Phil Shapiro, a long-time member, is proposing to start a new SIG, dealing with "public computing." The purpose of this SIG would be to document and explain free software — such as the nvu.com web authoring software, powerbullet presenter web multimedia software, moodle.org learning management system, and inkscape.org vector drawing software. I think this is a great idea.

Stay tuned. More changes are coming.

Frank Sokolove, President

*Frank Sokolove is the president of CPCUG. He can be contacted at frank\_sokolove@yahoo.com.*

## Internet Services Director's Report

Arrgh! As I write this, the server was down again yesterday afternoon, and again overnight for about eight hours. Enough to spoil my day.

So far, there's been a lot of discussion but not as many members have joined the MEMBER-TO-ISD List as I'd expected. By now, as many of you as we have e-mail addresses for have received two requests from the President and me to (1) subscribe to MEMBER-TO-ISD if you have suggestions or gripes about the CPCUG's online offerings; and (2) subscribe to the new ALTEMAIL announcement list with your alternative e-mail address, one *other* than *@cpcug.org* (if you have one of those). CPCUG and I will make very few announcements to this new list, but we want to be able to advise you of service problems, like the unavailability of the *@cpcug.org* service. If you use your *@cpcug.org* address it will not work if we're telling you about that server.

Once subscribed to MEMBER-TO-ISD, you can get "back issues" of the List's messages by sending to *LISTSERV@CPCUG.ORG* a message saying:

INDEX MEMBER-TO-ISD

and you'll get back a list of the filenames in the archive with prior messages. To get one of these files, send:

GET MEMBER-TO-ISD <filename>

where the word after GET is the List name and the last word is the "logged" file name, such as GET MEMBER-TO-ISD LOG0504A. Currently you cannot do this from the CPCUG web site, but it works fine by e-mail to the Listserv robot when you follow these instructions.

Plans are afoot for expanding the CPCUG offerings to the membership. We hope to work up a group buy, perhaps of Microsoft Office if we can get a good price, and to enlarge available personal web space. If you find this to be of interest, or would like us to find a broadband provider, join the discussion at MEMBER-TO-ISD.

Meanwhile, take a look at *www.cpcug.org* and let us know what you think. There's currently a debate about how much should appear in the first page that appears on the web, and I'd like more opinions. I would also be delighted to hear from volunteers who might want to contribute content or web-design talent.

Thanks for your patience.

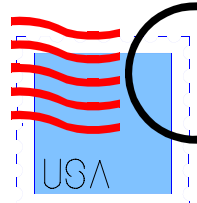
Mark Leymaster

*Mark Leymaster is the Internet Services Director for CPCUG. He can be reached at isd@cpcug.org.*

# Feedback



# What's New



## Feedback

**A** lot of new things are happening with CPCUG these days. A couple of months ago a new Board of Directors for CPCUG was installed. For the past few months the CPCUG.ORG web site and e-mail server has undergone a major transition, and the bugs continue to be addressed and progressively resolved. Karl Signell wrote a concise but complete set of directions for using the new LIST-SERV web interface for this issue of the **Monitor**, after doing a lot of hard work to get the web interface up and running properly. The new Internet Services Director, Mark Leymaster, continues to explore ways to improve Internet services for CPCUG members and CPCUG.ORG subscribers. He has been looking into so many matters, and has so much to report on an on-going basis, that he now gets his own monthly column so that we all can be kept informed. A new computer training facility has been established in Rockville, Maryland, as part of a developing relationship with Montgomery Community Television that presents exciting possibilities for all involved.

Maybe I got caught up in the flow of all the new developments, or maybe it is just coincidence, but I decided to make a few changes in the look of this issue of the **Monitor**. For the better, I hope. Do you notice anything different? Please let me know what you think of the changes. (Actually, I've been considering the changes for some time, and there may be more to come, little by little. Maybe I should offer a prize to the reader who reports back to editor@cpcug.org the most format changes.)

Send your responses and comments  
to [editor@cpcug.org](mailto:editor@cpcug.org).

The biggest change for me is my recent purchase of a new laptop computer. My first laptop. It is only the fourth computer system I've worked with in about a dozen years, since I first acquired my own computer. (I'm generally not a "fast adopter" of technology.) But I've been experiencing so much aggravation working on my current system that I finally had to take the plunge. I figured I couldn't hold off from joining the 21st Century any longer. And, after having read so much about Windows XP and Service Pack 2 in the pages of this magazine and elsewhere (I've been using Windows 98/SE), I look forward to finally becoming much better acquainted with them personally. I think.

I wonder why I feel such ominous foreboding at that thought.

Maybe it's because in the several days I've had this new laptop I've barely been able to explore very

much on it other than its End User License Agreements (EULAs)! Just about every application I try to

open first launches one of those horrendous documents that I must respond to before I'm allowed to go further. (This is new to me. I don't remember having to do this when I got my last new computer.) No allowance for pondering the various points, no taking "under advisement." No room for negotiation. Either I accept their terms, or EVERYTHING (hardware as well as software) has to go back to where I bought the machine.

That's what it says. I know that because I have forced myself to try to read through the entire statement. I say "try" because I find that my eyes start to glaze over as I plod through each numbered paragraph. I push myself because I suppose it would be a good idea to know what I may be agreeing to, just in case they try to slip in something in the fine print (actually, it is all fine print) about me having to eventually give them my first-born. But I'm not sure I even understand what they're stating, and I am sure I won't remember it five minutes later.

Gabe Goldberg presents a good approach for getting started with a new PC (see page 11 of this issue), but he doesn't cover EULAs. My question is whether I need to go to law school instead of computer training so I can use my new laptop!

James Katz  
Editor

### CORRECTION

In the April, 2005, issue of the **Monitor**, the book review of **Adobe Photoshop CS One-on-One** was printed with an incomplete listing of information about the book. The information should have been listed as follows:

*Adobe Photoshop CS One-on-One*,  
written by Deke McClelland.  
Published by Deke Press,  
with O'Reilly Media, Inc. 2004  
1005 Gravenstein Highway, North Sebastopol, CA  
ISBN: 0-596-00618-7 490 pages

The **Monitor** regrets this error and any inconvenience it may have caused.

# A New Web Interface for CPCUG.ORG E-mail Lists

By Karl Signell

The Capital PC User Group's Web site, CPCUG.ORG, has a new LISTSERV web interface for our e-mail list, which replaces the LWGate gateway on the old server. We currently host 50 lists on the web site, from ACCESSSIG-L to WPSIGD-L, courtesy of donated LISTSERV® software from L-Soft International. Dozens of volunteer list owners manage these lists.

Except for users of LWGate, subscribers had to send precise e-mail commands to *listserv@cpcug.org* to subscribe, sign off, suspend mail during vacation, change to digest mail, read archives, and other options. List owners had to learn precise commands and more to help their subscribers, adjust the security level of their lists to avoid spammers, manage the archives, avoid off-topic posts, and other options. Help with these commands was scattered in various crib sheets and manuals.

The new LISTSERV web interface at CPCUG.ORG gives subscribers and list owners an online alternative to the traditional e-mail commands. The following instructions are provided here to show you the steps for using the new LISTSERV® Interface:

For screen captures illustrating the instructions provided here, go to the CPCUG.ORG website:

Home > FAQs > LISTSERV® FAQs > LISTSERV® Web Interface

([www.cpcug.org/index.php?option=com\\_content&task=view&id=68&Itemid=40](http://www.cpcug.org/index.php?option=com_content&task=view&id=68&Itemid=40))

**A. All Users: Access and Login** (Registration for LISTSERV web access, first time only)

1. Using any browser (Firefox, Microsoft Internet Explorer, Netscape, Opera, etc.), open the new CPCUG.ORG website, not the old one. Do not use an old bookmark. Type "www.cpcug.org" into the browser address and press Enter. If you see the new orange and gray site colors, you're there. If you see the old green and gray site colors, you're not.

2. Click the orange tab, above right, marked "LISTSERV".

3. Your browser will open a new window with the header "Welcome to LISTSERV® 14.3" against a blue background. Scroll down to the section entitled "Assistance" and click on "Get a LISTSERV password for this server."

4. At the "Registering your LISTSERV Password" page, type the address you use for the e-mail list you want to manage (for example, *listserv-postmaster@*

*cpcug.org*) into the "E-mail Address" box. Choose a password for this LISTSERV web interface, not necessarily the same password you use for your e-mail or other *cpcug.org* logins. (Be sure to keep track of this password for use each time you log in to the LISTSERV web interface.) Carefully type this password in both password boxes. Click the "Register Password" button.

5. Keeping this page open, go to your e-mail program for the verification message from LISTSERV. Clicking on the link in the message will confirm your LISTSERV web registration for that address. Or use the e-mail reply, as it says.

6. Back at the LISTSERV web page, from the "Password Saved" dialog box, clicking on "follow this link" in the middle of the text will take you to the LISTSERV menu for subscribers and list owners.

Each time you visit the LISTSERV menu, you will first need to Login, using the hyperlink at the top right. Some browsers will insert an intermediate page that asks you to confirm your cookies are working by clicking on "follow this link" in the middle of the text.

**B. For List Subscribers** (After you have created a Login)

1. After login, select "Subscriber's Corner" from the Subscriber Pages section on the top left. You might have to scroll down to see the whole text.

2. Manage your subscriptions by adding or deleting lists, changing your subscription configuration, etc.

3. To subscribe to a new *cpcug.org* list, pull down the "Show" menu at the lower left and select "All Lists."

4. If necessary, scroll down the page to see a list of CPCUG.ORG lists. The lists to which you are subscribed appear at the top, followed by all public lists alphabetically arranged.

5. To subscribe to a new list, click the box to the left of the list name, scroll to the bottom of the page, and, from the pull-down menu in the blue space above the "Submit" button, select "Subscribe".

continued on page 17

# Technology News Review

by Sue Crane, Big Bear, CA, Computer Club [www.bigbearcc.org](http://www.bigbearcc.org)

## **Molecular Computers Would Be Faster, Smaller & Cheaper**

Researchers from Hewlett-Packard (HP) have created devices called crossbar latches that can be used to perform calculations in microprocessors, the same function silicon transistors now have. Crossbar latches — which consist of a grid of microscopic wires linked by molecules at their intersections — are far smaller and, potentially, far cheaper to make because they are produced using processes more like inkjet printing than the etching processes required for today's chips. HP has already shown how crossbar latches can be used in memory. "This is the final piece of the puzzle for building a molecular computer," said Phil Kuekes, senior computer architect and primary inventor at HP's Quantum Science Research (QSR) unit.

## **New Laser Chip**

Intel has created a chip containing eight continuous Raman lasers by using fairly standard silicon processes rather than the somewhat expensive materials and processes required for making lasers today. The lasers emit a continuous stream of light that can then be modulated, or chopped up, into a stream of impulses that can represent data. Cheap optical parts could not only lead to faster computers but also to less expensive and more accurate medical equipment.

## **Faster Hard Drives**

Dataslide proposes to abandon hard drive rotation in favor of vibration. A new prototype drive has a rectangular plate coated with magnetic storage material. A second plate hovers above with an array of lithographed heads on its surface. The lower plate vibrates from side to side at 600 times per second, a process that delivers data 10 times faster than a 15,000 RPM rotating disk drive. Dataslide envisions tweaking the product to increase the vibration to 100,000 a second — equivalent to a disk rotating at 12 million RPM.

## **Your Cell Phone Could Infect your Car!**

A report by IBM Security Intelligence Services predicts that viruses spreading to mobile phones, PDAs, and wireless networks could infect the embedded computers that increasingly are used to run basic automobile functions. The average new car runs 20 computer processors and about 60 megabytes of

software code, raising more opportunities for malfunctions.

## **New Technology Could Bring Sight to the Blind**

A small camera mounted on spectacles and connected to the optical nerve could restore the sight of thousands of people suffering from deterioration of the retina, European scientists said recently. The technology could also help people with the retinal disease macular degeneration, which can lead to loss of fine-detail sight, and is one of the leading causes of visual impairment in the United States. A camera mounted on glasses sends images to an electronic device implanted behind the eye and stimulates the optic nerve, which passes the information to the brain.

## **Edible origami by Canon?**

The Canon i560 inkjet printer doesn't just print menus for the Moto restaurant in Chicago; it prints menus you can eat. Homaru Cantu, the executive chef, prints menus and many other items onto edible starch-based paper. Instead of using the typical CMYK inks — cyan, magenta, yellow, and black — Cantu has filled the cartridges with edible solutions. Think SSBS: sweet, sour, bitter, and salty. Cantu uses combinations of these four liquids on the edible paper to create dishes unlikely to be found anywhere else, such as "baked map of Alaska" and a type of maki sushi that he wraps in flavored paper bearing images of sushi, instead of seaweed.

## **Antispam Tools Initiate New HIV Vaccines**

At the Conference on Retroviruses and Opportunistic Infections in Boston, workers for Microsoft Research said they have been using database and anti-spam software to identify previously unseen patterns in genetic mutations of HIV. The researchers said their work illustrates how medical experts can use machine-learning, data-mining, and other software methods to sort through millions of strains of HIV and improve vaccines. By seeking out genetic patterns that could be used to train a person's immune system to fight the virus, the researchers said they are already making headway. The group reported that the first of its proposed vaccine designs is already undergoing laboratory testing.

*continued on page 20*

# The Whole World in My Hand Overcoming the Geek Belt Sag Factor

by Tom Gutnick

Copyright © 2005 by Tom Gutnick. All rights reserved.



A problem for many of us geeks — and many of us normal people, too — is what is called the “belt sag factor”. Hang a pager on your belt, add a mobile phone, then a handheld computer, and before long, your belt is sagging and doing a poor job of holding up your pants. Although this might make your garb look more contemporary, I’ve never been good at keeping up with fashion trends. One potential solution to the belt sag factor is ‘device convergence’: combining multiple functions in a single device.

Even several years ago, you could get a device from Kyocera that combined cell phone and PalmOS functionality — but it was a rather big, clunky contraption. Since then, various convergent devices have appeared on the market. In general, we find that any given device tends to be better either as a phone or as a PDA, but not both. The trend from year to year, however, is that they keep improving overall.

Let me make some digressions here. In addition to PalmOS-based devices, there are Microsoft Mobile-based Smartphones — but given my prejudices regarding Palm versus Microsoft as well as the ongoing purpose of this column, I don’t recommend them. Also, if your primary concern is having continuous access to e-mail, your best option may well be a BlackBerry from Research in Motion (RIM).

Today, there are convergent devices available from a few manufacturers (note that product offerings change frequently, devices may be tied to specific telephone networks, and prices depend on rebates and phone service packages):

·PalmOne: the Treo 600 got great reviews when it came out, and now the Treo 650 has gotten rave reviews as absolutely, positively the best convergent device available. But it comes at a hefty price. Depending on your phone service plan, expect to pay anywhere from \$450 to \$700.

·Samsung: the SPH-i500 is available for use on the Sprint network, about \$400. Other models are believed to be under development.

·Kyocera: the 7135 Smartphone runs on the Cellular One and Verizon networks, available at Amazon.com for under \$200. Other models are

believed to be under development.

·GSPDA: this is a Hong Kong-based company, with several Xplore Smartphone models. Although their web site shows several models, it isn’t clear which service providers are offering them — but the phones all use GSM protocol, which effectively defines which networks are possibilities.

·PiTech: the Qool Labs QDA-700 also runs only on GSM networks.

You can get more information on all these offerings at [www.palmsource.com/products/products.cgi?Cat=Smartphones](http://www.palmsource.com/products/products.cgi?Cat=Smartphones).

So what do you get from one of these convergent devices? Well, obviously a standard mobile telephone, as well as a Palm-powered handheld computer. Some models include a camera, some the ability to play MP3 files. In addition, some models include data capability: you can surf the Web or get your e-mail everywhere you go.

Last month’s column listed a number of criteria to be considered when buying a PDA, including size and weight, screen size and resolution, battery capacity, expansion memory, audio-visual and multimedia capabilities, processor speed, memory capacity, etc. I won’t repeat that information here, but suffice it to say that the same criteria apply to convergent devices.

There are a few potential disadvantages to using a convergent device:

·Cost: the devices themselves are expensive, and full functionality may require a data plan from your cell phone provider, which is generally an additional charge on top of your basic service. (Of course, if I had an employer picking up the tab, I wouldn’t give this a second thought!)

·Screen: even though some models (such as the Treo 650) have really good screens, they are much smaller than on a dedicated PDA model. This may not be an issue for some people, but given the number of hours I spend every day with my eyeballs glued to my Palm, I find this a serious consideration.

·Availability: I tend to be paranoid about the technologies that I become dependent upon — what do I do if I lose a device or it needs a trip to

continued on page 21



# Rich's Ramblings

by Rich Schinnell

I have been testing the Virtual PC (VPC) for the Macintosh and have successfully installed all the versions of Microsoft products from DOS 6.22 and Windows for Work Groups 3.11 to Windows XP home. Even Ubuntu Linux. All worked well, and, as you would expect, there was some slowdown, but still acceptable. The VPC for the Mac cost \$129.95 at almost any local store that sells Mac products.

When I learned of the prospects of a real cheap emulator, called iEmulator, I was enthused. So I bit and paid the \$23.95 over the web to be able to download the product. It installed pretty easily and the documentation (all 77 pages) had to be printed. (Normally, I don't read the documentation).

After reading how to install a DOS session, and it was successfully accomplished, I then went to the section where it showed the step-by-step instructions to install Windows 98/SE. I had a heck of a time getting Windows 98 to install properly, as the instructions did not specify the format c: /s option properly. I finally figured out that installing Windows 98 on the hard disk is a lot easier if you copy all the Windows 98/SE files in a sub-directory on the formatted hard disk created by iEmulator. After a couple of hours, which seemed like an eternity, I was able to get to the main Windows 98 desktop. It seemed to be fine. (At least, at first.)

I had serious problems

as the network on my MAC was not recognized. I went to the DOS command line to find out what was the problem with my network and tried every trick in the book to get an Internet Protocol (IP) address from my router.

The output of the IPCONFIG/ALL command showed that the IP number assigned to the network card was 10.0.2.25, which evidently is the IP translation from iEmulator and the Macintosh network card. (See Figure 2.) I had no idea of what could be the problem, but nothing I did would allow me to access the Internet. I tried to execute the icon placed on the desktop, which is labeled "Connect to the Internet," and the screen opened to what would normally be a selection screen on selecting the method to connect to the Internet. No Joy in Mudville.

From the press release for "iEmulator":

"iEmulator.com Releases iEmulator 1.7.5, a Major Upgrade to the Popular PC Emulator for PowerPC-based Macintosh Computers..."

"iEmulator is a high-performance PC emulator for Mac OS X 10.3.0 or later, and has been available since November of 2004. For more information please visit <http://www.iemulator.com...>"

Priced at \$23.95 (Only available via the Web)  
Produced by: BANG Studios Canada Edmonton, Alberta — CA 780-554-2129

continued on page 22



Figure 1: Macintosh desktop with iEmulator running Windows 98/SE.

# Bringing Home Baby — Getting Started with a New PC

By Gabe Goldberg, APCUG Advisor and Columnist, AARP Computers and Technology Web Site, [ggoldberg@apcug.net](mailto:ggoldberg@apcug.net)

**M**ost purchases provide instant gratification — you buy, you bring home (or have delivered), you enjoy. Groceries, clothes, toasters, furniture, and such, don't involve study, burdensome chores, or required add-ons for safe usage. While it's worth reading a new car's owners manual, and installing home electronics sometimes requires assembly and cabling, no other burden matches that of a personal computer.

Wait, you might say: Plug it in, turn it on — simple. But reality isn't so simple. There's a lot to do before a PC can safely be used on the Internet, and still more is required to ensure long-term problem-free operation. This article outlines what to do; more information is available on the AARP Computers and Technology Web site ([www.aarp.org/computers](http://www.aarp.org/computers)) and by 'Googling' for specific terms used.

No matter where you buy your PC — brand-name Web site, electronics store, custom builder — get all CDs, manuals, registration cards, and warranty material for hardware/software that's installed. You may need this material to purchase discounted upgrade versions or to apply fixes.

Similarly, warranty material facilitates getting hardware/software support if you can't get satisfaction from your system's vendor. You may pay a little extra for software installation CDs or an image restore CD (which restores your hard drive's delivery-date contents); this is a worthwhile expense.

Assemble and turn on the system, but don't go online. Make sure the system boots properly and that all components operate. There's often a short "no questions asked" period during which dead or defective systems can be returned or exchanged easily. You may have trouble later getting problems resolved, and the vendor may insist on repairing the system instead of replacing it.

Note terms of rebates your purchase includes and submit them promptly. Many vendors won't pay rebate claims submitted even one day late.

Record the hardware model and serial numbers for your PC and components. My PC builder provided all boxes and packing material, since it often contains useful information. Submit product registration material; though it may generate junk mail, it lets vendors notify you of problems or new updates/

versions available.

At this point you may feel the need to get organized. Good idea! Just as you've likely organized files for auto repairs, health records, and such, your PC deserves a filing system.

You can pick the structure — file cabinet folders, PC-specific storage containers, whatever — filing everything makes things much pleasanter later.

Part of my system — optional but valuable — is recording changes I make to my PC, software I install, upgrades I download, problems I have, configuration settings, and communications with vendors, so I can later refer to the log and be sure what happened. Some people print screen shots — image captures — of important configuration settings for reference in case they must be recreated.

Plan how to separate data from software, to simplify backing up and restoring what's most valuable and hardest to recreate. This can be as simple as establishing a directory or folder in which you store all applications' data, or it may involve dividing your hard drive into data and software partitions. If you're replacing a PC, copy data you're migrating onto the hard drive and ensure that it's complete and readable. Don't discard the old PC until you're sure you copied everything you need. Plan and implement a backup scheme and test it occasionally by restoring files.

A standard PC likely included a "software bundle." If you're lucky, this includes applications you want. In most cases, bundles are applications you'll never use. To remove clutter, consider deleting what you're sure you won't need, using application-specific uninstall tools or Windows' built-in Add/Remove Software tool.

If hard drive partitions have meaningless labels (e.g., "IBM Preload") you can set them to useful values ("Dad's PC", "C:", etc.). Run scandisk and disk defragmentation tools to ensure you're getting a clean start.

If you're working on a Windows XP system, install Service Pack 2 before going online. You can order this on CD from Microsoft or borrow a copy. This large set of fixes will protect you against many — but

*continued on page 20*

# Letters to "Late Nite"

Hosted by Marty Shinko



**Q05V.0:** How important are "strong" passwords (and what are they)?

**A0:** According to an article entitled "How do computer hackers 'get inside' a computer?" by Professor Julie Ryan in the January, 2005, issue of Scientific American magazine, "The easiest weakness to exploit is a poorly conceived password."

Professor Ryan explained that "get inside" can mean "accessing the information stored on a computer" or "capturing information being sent between systems" among other things. (Incidentally, Professor Ryan also suggested using the term "Unauthorized User", or the acronym "UU", instead of the term "computer hacker," i.e., it would have been more correct to have "How do unauthorized users 'get inside' a computer?" as the title for the article.)

In the computer field, passwords are how you keep other people from using your property or resources. You wouldn't leave your car unlocked, parked in the mall parking lot, keys waiting in the ignition, would you? In the same way, passwords are a way of locking the doors and not leaving the keys to the ignition handy, in plain sight. Passwords protect against having someone else using your computer accounts and your other resources that those computer accounts might give them access to (like bank accounts).

**Q05V.1:** Why would anyone want to break into my computer? My PC isn't the equivalent of a hot sports car.

**A0:** They probably don't want to break into your home computer; they probably want to "get inside" the computer at the bank where you do your banking. Their goal might be to guess your password so they could pose as you, and transfer all your money to their account in the Cayman Islands, for example. If you do any financial business online on the Internet you need to be using strong passwords.

**Q05V.2:** What makes a password "strong"?

**A0:** The idea of a *strong* password is, essentially, that nobody could guess it "in a million years", even if they knew lots about you. That rules out using your name as your password, or your social security number, e-mail address, birthdate, phone number, pet's name, kids' names, old hometown, your high school alma mater, your favorite team, etc. All those

would be easy to guess.

Also, the longer the password, the better; making a password one character longer makes it take almost 100 times longer to "crack" or guess.

One current estimate is that, even with dedicated, specialized equipment, it would take thousands of years to try every combination of characters to guess a 14-character password.

One caution that goes along with that, is that many systems don't accept passwords any longer than 15 or 16 characters, so if you enter a password string longer than that, only the first 16 characters or so are used, and the rest would be ignored.

**Q05V.3:** What are some reference sites where I can find out more about passwords?

**A0:** Some sites I found useful and informative include the following:

- There's an article about passwords by Gabe Goldberg, CPCUG Outreach Director and Program Director, entitled "Simple Password Practices Keep PC and Online Data Secure," at the American Association of Retired Persons (AARP) web site: [www.aarp.org/learntech/computers/howto/Articles/item93133800.html](http://www.aarp.org/learntech/computers/howto/Articles/item93133800.html)
- The site [www.collegeboard.com/html/account\\_learnmore\\_pwd.html](http://www.collegeboard.com/html/account_learnmore_pwd.html) has some practical, easy suggestions for creating passwords
- A web page created by CPCUG member Neal Grotenstein, at [www.toad.net/cgi-bin/cgiwrap/spwgroup/lc.pl](http://www.toad.net/cgi-bin/cgiwrap/spwgroup/lc.pl) generates random character sequences to use for passwords
- A short summary of NASA guidelines about passwords, entitled "Problem Report and Corrective Action - Password Requirements," is at the site [https://pracaprod.msfc.nasa.gov/praca/review/public/html/password\\_requirements.htm](https://pracaprod.msfc.nasa.gov/praca/review/public/html/password_requirements.htm).

• The NASA document NPG 2810.1, entitled "NASA Procedures and Guidelines for Security of Information Technology," contains typical rules for creating reasonably strong passwords. The text of NPG 2810.1 can be found through the web site [www.c4i.org/NASA/](http://www.c4i.org/NASA/), and password guidelines are covered in section A.6.3, i.e. at [www.c4i.org/NASA/appendixa.html](http://www.c4i.org/NASA/appendixa.html), in appendix A of the document.

continued on page 23

When contacting me about a question appearing in my column, please refer to the question number.

Every question is numbered in the form Q'YR'MO.seq#, with a 2-digit year, and Roman numeral month. The answers will have a code for the responder, e.g., A0 = Marty Shinko.

# Microletter #149

by Paul Shapiro

... dedicated to the dissemination and exchange of information mostly for users of IBM PC-compatible personal computers.



## BASEBALL IS BACK AT LAST

With major league baseball returned to Washington, D.C., I am reminded of one of my earliest writing activities, over sixty years ago. Having acquired a typewriter and needing something to type (i.e., write about), I developed a whole bunch of pen-pals throughout the country and began writing letters about professional baseball. E-mail was far into the future. I was fifteen years old.

At the time major league baseball was confined to the U.S. East Coast, and for many years as I was growing up in D.C., we had a team. San Francisco had its Pacific Coast League minor league team, and Milwaukee had its American Association minor league team. There were many such ball clubs in many leagues, even on the East Coast. Newark, N.J., Baltimore (International League), you name it.

My correspondence widened to such an extent that we thought it would be a good idea to form a club, hence the Baseball Fan Club of America. Members would send me clippings of stuff I had written that were published in their own local papers. (See Figure 1.) It was an exciting time for me.

The then-existing *Washington Star* newspaper included a full-page youth activities section each Sunday, called the "Junior Star", managed by an editor-employee named Phil Love. This all led to me submitting an article for the Sunday *Washington Star*, which was published on October 12, 1941. Mr. Love invited me to the WMAL radio station studio in the old *Washington Star* building on 11th and Pennsylvania Avenue, where we rehearsed from his written script and later broadcast over the radio.

It was another exciting time.

I can now throw out the original tattered newspaper page. The scanned copy is actually readable!



## A LARGER (ENOUGH?) DISK DRIVE

With all the hassle in getting e-mail and often a Web connection via my Internet Service Provider (I won't say which one), I have been spending an awful lot of time with my computer, something unusual for me. And the key word here is awful. All has not been fun and games.

This unhappy period of around a month had me trying workarounds. My e-mail program, Eudora 6, kept telling me that it couldn't find the server. Outlook 2003, the Microsoft e-mail program available to me, behaved the same way. That ruled out the e-mail program as a culprit. I used two different phone lines with no success, so it wasn't the telephone.

When I couldn't use my favorite Word Perfect 10 program, or even reinstall it from the original CD, I was getting desperate. The original CD containing the program had always worked for me. Then I continued to run out of space on my C: drive, inhibiting me from using a Systems Restore or Defragmenter with my Windows XP Pro operating system.

These things were not in any way related to the server failures, but coming during the same time frame really compounded an already bad situation.

Try though I might, I couldn't see myself clear to paring down files on the C: drive to get more space, so I began looking for an additional hard drive. I figured that if I could find an inexpensive drive, of say around 40 gigabytes (GB), that would more than handle things, as I had been working with a 13 GB drive for almost five years.

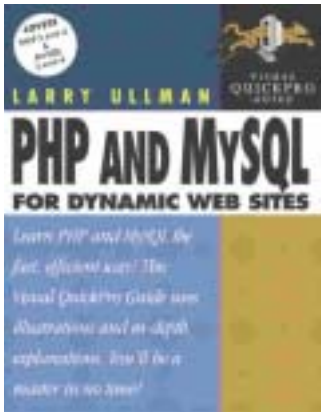
When *Staples* advertised a Maxtor160 GB drive (who in the world needs that much space?) for about the same price as 40-80 GB drives around town, I went for it. Being the all-thumbs type, I worked unsuccessfully for around two weeks trying to get a side cover off of my Dell computer. When I told a

Figure 1: Clipping of article by Paul Shapiro from the "Junior Star" section of the Sunday, October 12, 1941, *Washington Star*.

continued on page 17

# Book Review: *PHP and MySQL for Dynamic Web Sites: Visual QuickPro Guide*

Reviewed by Tom Gutnick



***PHP and MySQL for Dynamic Web Sites: Visual QuickPro Guide***

by Larry Ullman.  
Published by Peachpit Press, 2003.  
ISBN: 0-321-18648-6  
400 pages

**N**ot long after I created my first web page, my boss

wanted me to move beyond “brochure-ware” and create a web-based scheduler for our demo lab. Back then, the World Wide Web was a novelty and the whole notion of dynamic web pages was in its infancy. The tools were the Perl scripting language and the Unix “db” database system, and there were no books or classes on the subject. I did eventually get it figured out, but the wall probably still has a few dents from where I banged my head against it.

Today both the tools and the documentation are much better. Although I still occasionally use Perl, I now prefer to code my web server-side scripts in PHP, since it was designed for that specific purpose and makes it extremely easy. There’s no reason to mess with db, when MySQL is readily available — it’s an open-source, full-featured relational database system, and most web-hosting providers include it at no extra charge. And finally, thanks to Larry Ullman, there’s at least one good book to help you get started.

The introduction to *PHP and MySQL for Dynamic Web Sites: Visual QuickPro Guide* gives a realistic view of the book’s prerequisites, since it does not teach HTML or web page design, nor does it cover basic programming concepts. The author assumes that you have either “a cursory knowledge of PHP, familiarity with another programming language ... [or] the drive and ability to learn without being guided by the nose.” As a seasoned programmer, I found the pace comfortable, but the first few chapters do indeed whiz through PHP. On the other hand, he does not assume prior database experience, and covers both the Structured Query Language and MySQL at a basic

level.

The first two chapters are the quickie introduction to PHP. Chapter 3 gets into the basics of dynamic web sites, such as using HTML forms. The next two chapters introduce SQL and MySQL — actually somewhat of a whirlwind, when you consider that proper coverage of SQL easily needs a thick book in itself. Chapter 6 puts it all together: the interaction between PHP and MySQL to populate a web page from a database and to update the data. Chapter 7 covers cookies and sessions, an important topic for e-commerce web sites. Subsequent chapters cover security issues, debugging techniques, and web browser detection. Finally, three chapters provide detailed examples of content management, user registration, and e-commerce.

My biggest quibble with this book is the cookbook approach used. There is a lot of redundancy between the detailed instructions and the figures showing the scripted code. And certain steps common to multiple examples get repeated needlessly. I figure the book could have been 20% shorter without compromising clarity. On the other hand, the cookbook approach really does lead you by the nose in spots, and sometimes that’s not a bad thing.

Too many books provide code fragments, but without keeping sight of the big picture. Perhaps this book’s strongest point lies in its code examples, which are useful and detailed. Chapter 12, for example, develops a user registration system, allowing a user to register, log on, log off, change password, or reset a forgotten password. You almost don’t have to think to be able to drop this code into your own site.

There are many ways of creating dynamic web content — many scripting languages, many database systems to choose from. I generally advocate open-source software, partly for cost savings and partly for platform independence. Armed with this book, you’ll find PHP and MySQL to be a winning combination.

*Tom Gutnick is a CPCUG contributing editor (“The Whole World in My Hand”). He teaches web page design at Northern Virginia Community College. He has been designing web pages since 1994 (and writing programs a lot longer than that).*

# Browser Doohickeys, Doodads & Gizmos

by Vinny La Bash, Sarasota, FL., PC Users Group, [www.spcug.org](http://www.spcug.org)

**M**ost people change their surrounding to suit themselves. Your desk probably has some pictures that trigger pleasant memories. You may have added some new plants to your garden. Whether you have engaged in something as monumental as redecorating your house or as trivial as changing the default ring on your cell phone, your general point is to make your surroundings look and act they way you want them to, not the way someone else thinks they should.

Tweaking your Internet browser isn't any different. Due to the number of software add-ons available, you can change or add many different features. Some allow you to change the appearance of the interface; others help you to retrieve information more quickly. Several of them may even make using the Internet easier. Despite their sophistication, most install quickly, and the majority of them are free.

Almost everyone who searches the Web uses Google, Yahoo, or both. There are many other search engines, but these two dominate the bulk of the traffic. Switching between the two sites gets old quickly, so why not try Google's tool bar? It maintains a link to Google's web site, allowing instant access to many of Google's features no matter where else you may be on the Web. You can search, spell-check, block pop-ups, even turn UPS tracking numbers into web links.

Yahoo's tool bar has similar features, and it lets you search online yellow pages. You can check local movie and TV schedules. Yahoo has a nice email element, and it's very strong in financial features. You also get an anti-spyware tool.

Yahoo's tool bar is easy to find. Go to [www.yahoo.com](http://www.yahoo.com). Look toward the upper right hand corner of your browser window, click on the link, and follow directions.

For Google's entire bag of goodies, direct your browser to [www.google.com](http://www.google.com), and then click on the "more" button. You may need to scroll down the list of other tools to get to it. When you're finished, make a trip to [labs.google.com](http://labs.google.com) and enjoy the feast. This is Google's technology sandbox. These are prototype projects Google is currently working on,

meaning they are not quite finished yet. Even if you're not particularly adventurous, try the new Map feature. You may be so impressed you'll never use Mapquest again.

I do a lot of research online, and I have become a fan of Net Snippets because I can straightforwardly save a snapshot of a web page or any part of the page. The utility lets me save these "snippets" to

*continued on page 21*

## Free Weekly E-mail of CPCUG's 9-Day Calendar of Activities <CPCUGCAL-L>

The best way to keep up-to-date with all of CPCUG's activities is to subscribe to the free weekly e-mailing of the 9-day Calendar of Activities ("This Week at CPCUG").

Go to: [www.cpcug.org/cgi-bin/wa](http://www.cpcug.org/cgi-bin/wa)

Or, send an e-mail message to:

LISTSERV@CPCUG.ORG

containing the line:

SUBSCRIBE CPCUGCAL-L <yourfirstname>  
<yourlastname>

(Do not include the angle brackets.)

No entry in the subject line is required. You will receive a request to confirm your subscription by return e-mail.

After confirmation, the calendar will arrive each Friday or Saturday with CPCUG meetings, classes, seminars, and special events for 9 days – from Saturday through the following Sun-day. You will receive about eight e-mail messages a month.

This distribution list does not allow subscriber posting.

To unsubscribe, send e-mail (from the e-mail account from which you are subscribed) to:

LISTSERV@CPCUG.ORG

containing the line:

SIGNOFF CPCUGCAL-L

No entry in the subject line is required.

[New Training Location](#) continued from front cover

been forced to raise the price for all classes due to increased costs. In the case of classes at MCT, the greater increase is due to higher rent and utility expenses charged by MCT's building management. This is the first increase in course fees CPCUG has had to put into effect in three years. Even at these rates, classes through CPCUG remain a bargain when compared to other computer training outfits in the greater metropolitan area.

If you have any questions about the new training location at MCT, please send a message to [training@cpcug.org](mailto:training@cpcug.org), or call Karen Courtney in the CPCUG office at 301-762-9372. If you have ideas about types of courses you would like to see offered, or you would like to offer instruction in particular computer subjects, please be sure to let Karen know.

James Katz, Editor

*Directions, provided below, were researched and written by CPCUG Maryland Vice President Henry Whitney.*

## Directions to Montgomery Community Television (MCT) Computer Training Lab Facility

Studios: 7548 Standish Place, Derwood, MD  
Classroom: 7550 Standish Place

### **From Virginia, Potomac:**

Take I-270 north toward Frederick. Stay in the far right lanes and follow signs to Exit 8. At the exit bear right to Redland Road. After crossing Route 355, go to the second traffic signal and turn right onto Crabbs Branch Way. Go about 1.5 miles and turn right onto Standish Place. Turn right into the fifth driveway on right. Follow the driveway into the parking area, which is surrounded by buildings on three sides. The classroom is in the building on the north side of the parking lot.

### **From Frederick:**

From I-270 South, take Exit 9 onto I-370 toward the Shady Grove Metro Station. Stay in the right lane and take the first exit leading to Shady Grove Road and Route 355 South. Turn left onto Shady Grove Road and then turn right at the first intersection onto Route 355. At the third traffic signal, turn left onto Redland Road. At the second traffic signal turn right onto Crabbs Branch Way. Go about 1.5 miles and turn right onto Standish Place. Turn right into the fifth driveway on right. Follow the driveway into the parking area, which is surrounded by buildings on three sides. The classroom is in the building on the north side of the parking lot.

### **From Silver Spring:**

Take Georgia Ave. to Route 28 (Norbeck Rd.). Turn left, west toward Rockville. Turn right onto East Gude Drive. (Or take Veirs Mill Rd. north, turning right onto Route 28 (Norbeck Rd.), and then turning left onto East Gude Dr.) On Gude Dr., go through several lights and

turn right onto Crabbs Branch Way. Take the first left onto Standish Place. Turn left into the fourth driveway. Follow the driveway into the parking area, which is surrounded by buildings on three sides. The classroom is in the building on the north side of the parking lot.

### **From Washington D.C., Bethesda, Rockville:**

Take Route 355 (Wisconsin Ave./Rockville Pike) north past White Flint Mall. Continue 5 miles to East Gude Dr. Turn right onto East Gude Dr., then turn left on Crabbs Branch Way. Take the first left onto Standish Place. Turn left into the fourth driveway. Follow the driveway into the parking area, which is surrounded by buildings on three sides. The classroom is in the building on the north side of the parking lot.

### **Public Transportation:**

A Ride-On bus (Rte #59) runs between the Rockville and Shady Grove Metro stations (Red Line), as well as points beyond Shady Grove. The ride from the Shady Grove metro station is the most direct, as that station is only about 2 miles from MCT. To take the #59 Ride-On bus, go to the West side of the Shady Grove station. Be sure to get the #59 Ride-On going toward Rockville, not Lakeforest Mall or Montgomery Village Center. The stop you want for Standish Place is the last stop on Crabbs Branch Way before Gude Drive. From the bus stop, walk west on Standish Place about one-quarter mile to the fourth driveway on the left. Follow the driveway into the parking area, which is surrounded by buildings on three sides. The classroom is in the building on the north side of the parking lot.

More information, such as schedules and a route map, can be found at: [www.montgomerycountymd.gov/content/dpwt/transit/routesandschedules/allroutes/route59.asp](http://www.montgomerycountymd.gov/content/dpwt/transit/routesandschedules/allroutes/route59.asp).

[E-Mail Lists Interface](#) [continued from page 7](#)

6. Click on the "Submit" button when finished.
7. Click on "Help" at any stage for explanations.
8. Don't forget to Logout when finished with your web session.

**C. For List Owners** (After you have created a Login)

1. After login, select "List Management (List Owners Only)" from the Administration menu, top right.
2. Your e-mail address and your password should automatically appear in the Login Required page. Click through.
3. You can now manage your list by adding or deleting subscribers, changing the list configuration, etc.
4. Don't forget to Logout when finished.

[Microletter #149](#) [continued from page 13](#)

Senior SIG member of my plight she volunteered to do it for me. When it took her about 15 seconds to get the cover off I was stupefied. I had been trying to peel the cover off from its side, instead of just sliding it back. A little know-how goes a long way! I am indebted to CPCUG member Catherine Kaufman for getting me out of this bind.

When I decided to start afresh with a new copy of XP (I had to re-register it), I thought I had ample backup. I hadn't realized that the registry entries were all deleted even though my external drive still had all of the programs. So I really didn't have complete backups and I was in the midst of a long stretch reinstalling programs I want to continue to use. Along the way I did opt to forget about bringing back to life many of the programs I had. This is no joy.

The new drive did not appear at first to be the 160 GB I thought I was buying. The manual told me that there was a 137 GB size limit because it was such a large drive. What?! It was not clear what the 160 really meant; at least until I formatted the drive and found that it was "only" 137 GB. I really didn't mind having "just" 137 GB, but I was perplexed. With some gymnastics I could access the full 160 GB, according to the documentation, but I never could get it to work.

So I called Maxtor Support, twice. The first response I got was to remove my zip drive before installing the new drive; the second response gave me three options that might work for getting to those upper 23 GB. None of the suggestions panned out for me.

In desperation I went to the Control Panel of Windows XP Pro, then Administrative Tools, Computer Management, System Tools, Storage, and

Confused? Problems? Comments? We need your feedback on this new LISTSERV web interface. Send e-mail to [MEMBER-TO-ISD@CPCUG.ORG](mailto:MEMBER-TO-ISD@CPCUG.ORG). Also see "CPCUG E-mail Lists" on page 35 in the *Monitor*.

*Karl Signell is CPCUG's Postmaster, aka Site Manager, for LISTSERV lists. He can be contacted at [listserv-postmaster@cpcug.org](mailto:listserv-postmaster@cpcug.org).*

**Glossary**

**Subscriber:** member of an e-mail list  
**List owner:** administrator or manager of an e-mail list  
**E-mail list, or list:** names and addresses of all subscribers (not "a listserv," "the List Serve," etc.)  
**LISTSERV®:** Registered name of proprietary software for managing e-mail lists

finally, Disk Management. That seemed like a long way to travel. A graphic of the C: drive showed the 137 formatted partition, but also showed the whole drive as being 160 GB. When I right-clicked on that extra space I got the option to Format it. I clicked on that and as quick as a whistle I had another disk formatted partition of 23 GB, a new D: partition!

Windows XP does do some things right (if you can figure it out).

Having a large drive can also have its problems. How do you back it up? With another large drive? I'll settle for backing up smaller portions to CD disks. Just keeping track of what and where files are will be enough to keep me busy.

As I said, this was not all fun and games - sigh.

Maybe its time to return to a greater interest in baseball.

*Paul Shapiro can most quickly be reached at Internet e-mail address [paul.shapiro@gmail.com](mailto:paul.shapiro@gmail.com), as well as by cell phone 202 641 2740.*

**Volunteers Wanted**

**Writers & Reporters for the Monitor magazine**

The *Monitor* is always looking for good articles! If you are interested in writing an article, reporting on an event, taking photos at an event, or reviewing a book or software program, please contact us.

**Monitor Advertising**

Do you know of a corporation or entrepreneurial business that might benefit from an ad in the *Monitor*? Help make it happen by showing the *Monitor* to its decision makers. Increased advertising revenue means a larger magazine and more money for CPCUG's member benefit programs. And you can earn a commission on ads you place!

**Contact:** [editor@cpcug.org](mailto:editor@cpcug.org)

# May 2005

All meeting and class times are tentative. Check your e-mail and CPCUG website at [www.cpcug.org](http://www.cpcug.org) before attending. Please see CPCUG Meeting Sites on the inside back cover for location codes.

Sunday	Monday	Tuesday	Wednesday	Thursday	Friday	Saturday																																																																																				
<b>1</b> 3:00 PM ACT! SIG (HSCL)  PalmOS SIG (APA): e-mail Frank Sokolove for date.	<b>2</b> 7:30 PM Board of Directors Meeting (MCT)	<b>3</b> 6:30 PM (UHU) Under The Hood \$	<b>4</b> 7:00 PM Delphi SIG (IADB)	<b>5</b> 9:00 AM (UHU) RemObjects SDK and Data Abstract \$  6:30 PM (UHU) Burning CD's with Roxio EZ CD Creator \$  Yom Hashoah	<b>6</b> 6:30 PM (MCT) Intro to MS Word \$	<b>7</b> 10:00 AM Seniors SIG (Bedford)																																																																																				
<b>8</b> 11:00 AM GLITCH DC SIG (DIK)  Mother's Day	<b>9</b> 7:00 PM General Meeting TechTalk (WGas)  9:00 PM Beginners (and Beyond) SIG (WGas)	<b>10</b> 6:30 PM (MCT) Intro to MS Word \$  6:30 PM (UHU) Intro to Home Networking \$  7:00 PM Clipper SIG (E-mail Naseem Saab for location)	<b>11</b> 12:30 PM Statistics SIG (1800 M)  Yom Hazikaron	<b>12</b> 6:30 PM (UHU) Basics of Computers for Beginners \$  Yom Ha'Atzmaut	<b>13</b> 6:30 PM (MCT) Saving Digital Video to the PC \$	<b>14</b>																																																																																				
<b>15</b>	<b>16</b> 7:00 PM Virginia SIG (WGas)	<b>17</b> 6:30 PM (MCT) Personal Disaster - Recover and Backup Techniques \$  6:30 PM (UHU) Intro to MS Excel \$  7:30 PM Digital Video SIG (BCCSC)	<b>18</b> 7:00 PM Access SIG (VAMC)  7:30 PM Investment SIG (BLib)	<b>19</b> 6:30 PM (UHU) Job Hunting on the Internet \$  6:30 PM Robotics SIG (CU-P)	<b>20</b> 6:30 PM (MCT) Intro to Digital Video Editing on a PC \$	<b>21</b> 1:00 PM Entrepreneurs & Consultants SIG (CPL)  Armed Forces Day																																																																																				
<b>22</b>	<b>23</b>	<b>24</b> 6:30 PM (MCT) Windows Maintenance and Computer Troubleshooting \$	<b>25</b> 7:00 PM MS Office SIG (ASHA)	<b>26</b> 6:30 PM (UHU) Intermediate MS Excel \$	<b>27</b> Lag B'Omer	<b>28</b>																																																																																				
<b>29</b>	<b>30</b> Memorial Day	<b>31</b>	<div style="display: flex; justify-content: space-around;"> <table border="1" style="font-size: small;"> <caption>Apr 2005</caption> <thead> <tr><th>S</th><th>M</th><th>T</th><th>W</th><th>T</th><th>F</th><th>S</th></tr> </thead> <tbody> <tr><td></td><td></td><td></td><td></td><td>1</td><td>2</td><td></td></tr> <tr><td>3</td><td>4</td><td>5</td><td>6</td><td>7</td><td>8</td><td>9</td></tr> <tr><td>10</td><td>11</td><td>12</td><td>13</td><td>14</td><td>15</td><td>16</td></tr> <tr><td>17</td><td>18</td><td>19</td><td>20</td><td>21</td><td>22</td><td>23</td></tr> <tr><td>24</td><td>25</td><td>26</td><td>27</td><td>28</td><td>29</td><td>30</td></tr> </tbody> </table> <table border="1" style="font-size: small;"> <caption>Jun 2005</caption> <thead> <tr><th>S</th><th>M</th><th>T</th><th>W</th><th>T</th><th>F</th><th>S</th></tr> </thead> <tbody> <tr><td></td><td></td><td></td><td>1</td><td>2</td><td>3</td><td>4</td></tr> <tr><td>5</td><td>6</td><td>7</td><td>8</td><td>9</td><td>10</td><td>11</td></tr> <tr><td>12</td><td>13</td><td>14</td><td>15</td><td>16</td><td>17</td><td>18</td></tr> <tr><td>19</td><td>20</td><td>21</td><td>22</td><td>23</td><td>24</td><td>25</td></tr> <tr><td>26</td><td>27</td><td>28</td><td>29</td><td>30</td><td></td><td></td></tr> </tbody> </table> </div>				S	M	T	W	T	F	S					1	2		3	4	5	6	7	8	9	10	11	12	13	14	15	16	17	18	19	20	21	22	23	24	25	26	27	28	29	30	S	M	T	W	T	F	S				1	2	3	4	5	6	7	8	9	10	11	12	13	14	15	16	17	18	19	20	21	22	23	24	25	26	27	28	29	30		
S	M	T	W	T	F	S																																																																																				
				1	2																																																																																					
3	4	5	6	7	8	9																																																																																				
10	11	12	13	14	15	16																																																																																				
17	18	19	20	21	22	23																																																																																				
24	25	26	27	28	29	30																																																																																				
S	M	T	W	T	F	S																																																																																				
			1	2	3	4																																																																																				
5	6	7	8	9	10	11																																																																																				
12	13	14	15	16	17	18																																																																																				
19	20	21	22	23	24	25																																																																																				
26	27	28	29	30																																																																																						

Verify date and time of event at [www.cpcug.org/user/comm/cal-6mon.html](http://www.cpcug.org/user/comm/cal-6mon.html)

# June 2005

All meeting and class times are tentative. Check your e-mail and CPCUG website at [www.cpcug.org](http://www.cpcug.org) before attending. Please see CPCUG Meeting Sites on the inside back cover for location codes.

Sunday	Monday	Tuesday	Wednesday	Thursday	Friday	Saturday																																																																																													
<div style="display: flex; justify-content: space-around;"> <div style="border: 1px solid black; padding: 5px;"> <p style="text-align: center;">May 2005</p> <table border="1" style="width: 100%; text-align: center;"> <tr><td>S</td><td>M</td><td>T</td><td>W</td><td>T</td><td>F</td><td>S</td></tr> <tr><td>1</td><td>2</td><td>3</td><td>4</td><td>5</td><td>6</td><td>7</td></tr> <tr><td>8</td><td>9</td><td>10</td><td>11</td><td>12</td><td>13</td><td>14</td></tr> <tr><td>15</td><td>16</td><td>17</td><td>18</td><td>19</td><td>20</td><td>21</td></tr> <tr><td>22</td><td>23</td><td>24</td><td>25</td><td>26</td><td>27</td><td>28</td></tr> <tr><td>29</td><td>30</td><td>31</td><td></td><td></td><td></td><td></td></tr> </table> </div> <div style="border: 1px solid black; padding: 5px;"> <p style="text-align: center;">Jul 2005</p> <table border="1" style="width: 100%; text-align: center;"> <tr><td>S</td><td>M</td><td>T</td><td>W</td><td>T</td><td>F</td><td>S</td></tr> <tr><td></td><td></td><td></td><td></td><td></td><td></td><td>1 2</td></tr> <tr><td>3</td><td>4</td><td>5</td><td>6</td><td>7</td><td>8</td><td>9</td></tr> <tr><td>10</td><td>11</td><td>12</td><td>13</td><td>14</td><td>15</td><td>16</td></tr> <tr><td>17</td><td>18</td><td>19</td><td>20</td><td>21</td><td>22</td><td>23</td></tr> <tr><td>24</td><td>25</td><td>26</td><td>27</td><td>28</td><td>29</td><td>30</td></tr> <tr><td>31</td><td></td><td></td><td></td><td></td><td></td><td></td></tr> </table> </div> </div>			S	M	T	W	T	F	S	1	2	3	4	5	6	7	8	9	10	11	12	13	14	15	16	17	18	19	20	21	22	23	24	25	26	27	28	29	30	31					S	M	T	W	T	F	S							1 2	3	4	5	6	7	8	9	10	11	12	13	14	15	16	17	18	19	20	21	22	23	24	25	26	27	28	29	30	31							<b>1</b> <div style="border: 1px solid black; padding: 2px; margin-top: 5px;">7:00 PM Delphi SIG (IADB)</div>	<b>2</b>	<b>3</b>	<b>4</b> <div style="border: 1px solid black; padding: 2px; margin-top: 5px;">10:00 AM Seniors SIG (Bedford)</div>	<div style="border: 1px solid black; padding: 2px; margin-top: 5px; width: 100%;">PalmOS SIG (APA): e-mail Frank Sokolove for date.</div> <div style="border: 1px solid black; padding: 2px; margin-top: 5px; width: 100%;">Pocket PC SIG: e-mail Ray Wiley for date, time, and location.</div>	
S	M	T	W	T	F	S																																																																																													
1	2	3	4	5	6	7																																																																																													
8	9	10	11	12	13	14																																																																																													
15	16	17	18	19	20	21																																																																																													
22	23	24	25	26	27	28																																																																																													
29	30	31																																																																																																	
S	M	T	W	T	F	S																																																																																													
						1 2																																																																																													
3	4	5	6	7	8	9																																																																																													
10	11	12	13	14	15	16																																																																																													
17	18	19	20	21	22	23																																																																																													
24	25	26	27	28	29	30																																																																																													
31																																																																																																			
<b>5</b> <div style="border: 1px solid black; padding: 2px; margin-top: 5px;">3:00 PM ACT! SIG (HSCL)</div>	<b>6</b> <div style="border: 1px solid black; padding: 2px; margin-top: 5px;">7:30 PM Board of Directors Meeting (AUMC)</div> <p style="color: red; margin-top: 5px;">Yom Yerushalayim</p>	<b>7</b>	<b>8</b>	<b>9</b>	<b>10</b>	<b>11</b>																																																																																													
<b>12</b> <div style="border: 1px solid black; padding: 2px; margin-top: 5px;">11:00 AM GLITCH DC SIG (DIK)</div>	<b>13</b> <div style="border: 1px solid black; padding: 2px; margin-top: 5px;">7:00 PM General Meeting TechTalk (WGas)</div> <div style="border: 1px solid black; padding: 2px; margin-top: 5px;">9:00 PM Beginners (and Beyond) SIG (WGas)</div> <p style="color: red; margin-top: 5px;">Shavuot</p>	<b>14</b> <div style="border: 1px solid black; padding: 2px; margin-top: 5px;">7:00 PM Clipper SIG (E-mail Naseem Saab for location)</div> <p style="color: red; margin-top: 5px;">Flag Day</p>	<b>15</b> <div style="border: 1px solid black; padding: 2px; margin-top: 5px;">7:00 PM Access SIG (VAMC)</div> <div style="border: 1px solid black; padding: 2px; margin-top: 5px;">7:30 PM Investment SIG (BLib)</div>	<b>16</b> <div style="border: 1px solid black; padding: 2px; margin-top: 5px;">6:30 PM Robotics SIG (CU-P)</div>	<b>17</b>	<b>18</b> <div style="border: 1px solid black; padding: 2px; margin-top: 5px;">1:00 PM Entrepreneurs &amp; Consultants SIG (CPL)</div>																																																																																													
<b>19</b> <p style="color: red; margin-top: 5px;">Father's Day</p>	<b>20</b> <div style="border: 1px solid black; padding: 2px; margin-top: 5px;">7:00 PM Virginia SIG (WGas)</div>	<b>21</b> <div style="border: 1px solid black; padding: 2px; margin-top: 5px;">7:30 PM Digital Video SIG (BCCSC)</div> <p style="color: red; margin-top: 5px;">Summer begins</p>	<b>22</b> <div style="border: 1px solid black; padding: 2px; margin-top: 5px;">7:00 PM MS Office SIG (ASHA)</div>	<b>23</b>	<b>24</b>	<b>25</b>																																																																																													
<b>26</b>	<b>27</b>	<b>28</b>	<b>29</b>	<b>30</b>	<div style="border: 3px double black; padding: 10px; margin-top: 10px;"> <p>For a list of meeting site location codes and addresses, please see the inside back cover of the <i>Monitor</i>.</p> </div>																																																																																														

Verify date and time of event at [www.cpcug.org/user/comm/cal-6mon.html](http://www.cpcug.org/user/comm/cal-6mon.html)

## **Databases Charged as Lax With Personal Information**

After the huge security breach by ChoicePoint, releasing the personal information of 145,000 individuals earlier this month, Senators Charles Schumer and Patrick Leahy have requested hearings, declaring, "It's time to turn some sunshine on these developments so the public can understand how and why their personal information is being used." A Schumer spokesman claimed that a researcher at a major corporation not involved in investigations was able to get the complete social security numbers from Westlaw's information database using the "People-Find" feature. Other companies have recently acknowledged that they may have inadvertently left consumer information unprotected. The payroll records of at least a dozen companies were exposed to the Internet by a flaw in the online W-2 service of PayMaxx. A flaw in the PayMaxx Web site exposed the financial information of customers' workers, the payroll-services firm acknowledges. In addition, cell-phone service provider T-Mobile has dealt with ongoing security problems that have led to the publication of celebrity Paris Hilton's personal

information and the phone numbers of many Hollywood stars.

## **Microsoft Authentication Changes Again**

Customers who find themselves reinstalling Windows XP should be ready for a headache: Microsoft will no longer support activation over the Internet for PCs with Windows pre-installed. Intended to curb stealing and selling of Certificates of Authenticity, the new security measure will initially be limited to the Windows XP software preinstalled on systems shipped by the top 20 PC sellers.

## **Battlestar Galactica Available for FREE Download!**

In an unprecedented move, The SciFi channel has made Episode "33" (Season 1, Episode 1) of Battlestar Galactica (season 1 hasn't even concluded) available for free, uncut and commercial free, online at [www.SciFi.com](http://www.SciFi.com). Also available are deleted scenes from the series.

*This article is provided by The Editorial Committee of the Association of Personal Computer User Groups (APCUG), an international organization of which CPCUG is a member, and is reprinted with permission.*

---

## **Getting Started with a New PC**

[continued from page 11](#)

not all! — online risks by (among other things) upgrading and enabling Microsoft's software firewall.

If you're on a broadband (cable or DSL) connection, install a router between your ISP connection and your PC and configure it to be secure.

Now install/update/run anti-virus and anti-spyware software.

Run Windows Update (click "Start," then "All Programs") to download and install recent fixes. This may require repetitions and reboots until no additional fixes are available. Run this periodically — at least monthly.

You can ensure that device drivers (software links for hardware components) are current by visiting Web sites for your PC manufacturer and hardware components.

Install your applications one at a time with a "cooling off" period in between. This ensures that each works properly and helps identify problems. A good rule when working on PCs is to change one thing at a time, else you can't pinpoint what effects changes cause. After each installation, run any "check for updates" functions.

Consider downloading a Web browser to use instead of the built-in but insecure Internet Explorer (IE). Many alternatives such as Mozilla Firefox im-

prove security and provide better browsing functions. If you use IE, set options to be more secure than default values.

I'm not sure whether it's good or bad news that Windows is infinitely customizable. As you use different Windows functions and applications, browse their Options/Tools/Settings/Customization menus. You'll likely find simple changes that accommodate your preferences.

Finally — and in spite of warnings about risks — don't be afraid: enjoy your PC and the Internet it brings to you. But be careful and sensible. Don't open unexpected attachments, don't answer e-mailed requests for personal information, and be cautious about installing software from unknown vendors.

*Gabe Goldberg is a freelance technology writer, editor, and consultant, and currently serves as CPCUG's Outreach Director and Program Director. He can be reached at [gabe@gabegold.com](mailto:gabe@gabegold.com).*

*This article is provided by The Editorial Committee of the Association of Personal Computer User Groups (APCUG), an international organization of which CPCUG is a member. The article originally appeared on AARP's Computers and Technology Web site, <[www.aarp.org/computers](http://www.aarp.org/computers)>. (c) AARP 2005. Permission is granted for reprinting and distribution by non-profit organizations with content reproduced essentially unchanged and this paragraph included.*

## Browser Doohickeys, Doodads, & Gizmos continued from page 15

organize for offline viewing. This eliminates the need to search for the same page multiple times, and is a godsend if the site ever goes offline. Net Snippets is the kind of tool you never knew you needed, but then you can't live without it. There is no one thing that grabs you, but a host of little things like the ability to highlight and annotate that make Net Snippets a "must have" tool. Get it at [www.netsnippets.com](http://www.netsnippets.com).

RSS readers are rapidly emerging from obscurity to necessity. Depending on whom you ask, RSS stands for "Rich Site Summary", "RDF Site Summary", or "Really Simple Syndication." RSS is a dialect of XML and its "geek-speak" nature has probably contributed to its slow acceptance, but its benefits are undeniable. The technology notifies you whenever something on your favorite web sites change.

The original RSS was designed by Netscape as a format for building portals of headlines to mainstream news sites. It has rapidly evolved into something far different and much more useful. Get news headlines, stock quotes, or alerts when an item you've been waiting for is available. You can save yourself a lot of time because you don't have to visit individual web sites to see what's new. A large bonus is that RSS feeds can't be tampered with. That means they are immune from attacks by spyware, viruses, Trojans, and other assorted evil-intentioned software. In Windows, Pluck is the most popular RSS add-on. It's easily downloaded from [www.pluck.com](http://www.pluck.com).

If you're still using the basic plain vanilla browser, try at least one of these tools to boost your web experiences.

*Vinny La Bash is a member of the Sarasota, FL., Personal*

*Computer Users Group, and can be contacted at [vlabash@home.com](mailto:vlabash@home.com).*

*This article is provided by The Editorial Committee of the Association of Personal Computer User Groups (APCUG), an international organization of which CPCUG is a member.*

*Copyright 2005. This article is from the April 2005 issue of the Sarasota PC Monitor, the official monthly publication of the Sarasota Personal Computer Users Group, Inc., P.O. Box 15889, Sarasota, FL 34277-1889. Permission to reprint is granted only to other non-profit computer user groups, provided proper credit is given to the author and our publication.*

## Whole World In My Hand

continued from page 9

the repair shop? It's hard for me to be without my phone, and absolutely unbearable to be without my Palm. How would I survive if they're combined into a single device and suddenly I'm without it?

This should give you enough information to get started on selecting a device, but, ultimately, you have to do your own evaluations to find the right device for you — one that meets your communications needs, that meets your information management needs, and that feels right when you carry it around, with whatever fashion statement you care to make.

*Tom Gutnick is president of Sunny Banana Information Technology Consulting, and a Palm Powered Software Champion. He teaches classes on the use of Palm handhelds, and provides both individual and organizational consultation for their effective implementation and use. He can be reached at [tag@sunny-banana.com](mailto:tag@sunny-banana.com) or 703.786.5541.*

## Inactive SIGs

The following SIGs are not active at this time. Please contact [frank\\_sokolove@yahoo.com](mailto:frank_sokolove@yahoo.com) if you are interested in helping start up of any of these SIGs:

- Internet
- OS/2
- WordPerfect
- Visual Basic
- Windows
- Project Management

## New SIGS

If you are interested in starting a new SIG (or re-activating an inactive SIG), please contact [frank\\_sokolove@yahoo.com](mailto:frank_sokolove@yahoo.com).

## Subscribers to CPCUG.ORG:

If you are having technical problems  
accessing the Internet,  
call the Millkern System Status Line  
(301-738-9753)  
for a recording  
of the current system status.

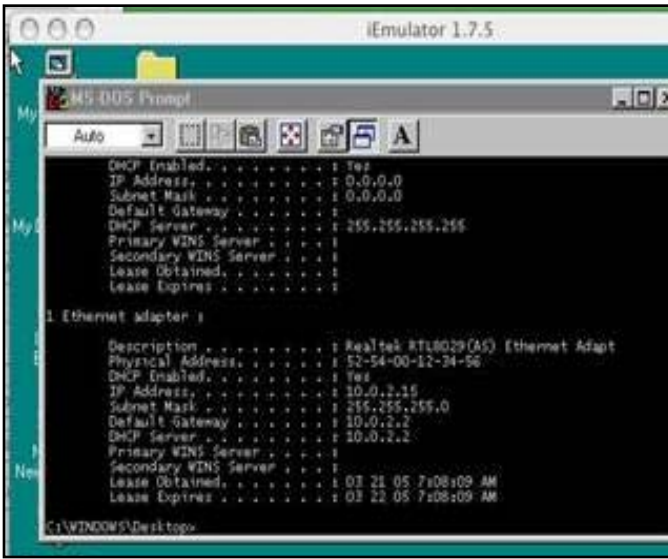


Figure 2: Windows98 running IPCONFIG.EXE/all

So, I then went to the "My Computer" icon and selected "Properties" to be able to check out the network interface card (NIC) configuration. I then

looked at what is shown in Figure 3.

The selectable option for "Exists in all Hardware Profiles" was not checked, so I decided to check it and then rebooted the system. Still no network connection that would allow me to get to the Internet.

I was just about stumped, and this is from a person who does not give up easily.

Personal Opinion: I do not think that a normal Macintosh user who never has installed DOS and Windows 98 would ever be able to get Windows installed easily. I did it primarily based on my past experience in DOS and Windows days.

A few deficiencies in the iEmulator are that the clock seems to almost always be incorrect.

I e-mailed the Help Desk people at iEmulator, and they were very helpful. They told me that this had happened a few times and they had no fix for the problem. After sending me an image file for a startup up floppy disk, I still had no luck in getting Windows 98/SE to access the Internet. So, Rich gives

[continued on page 24](#)

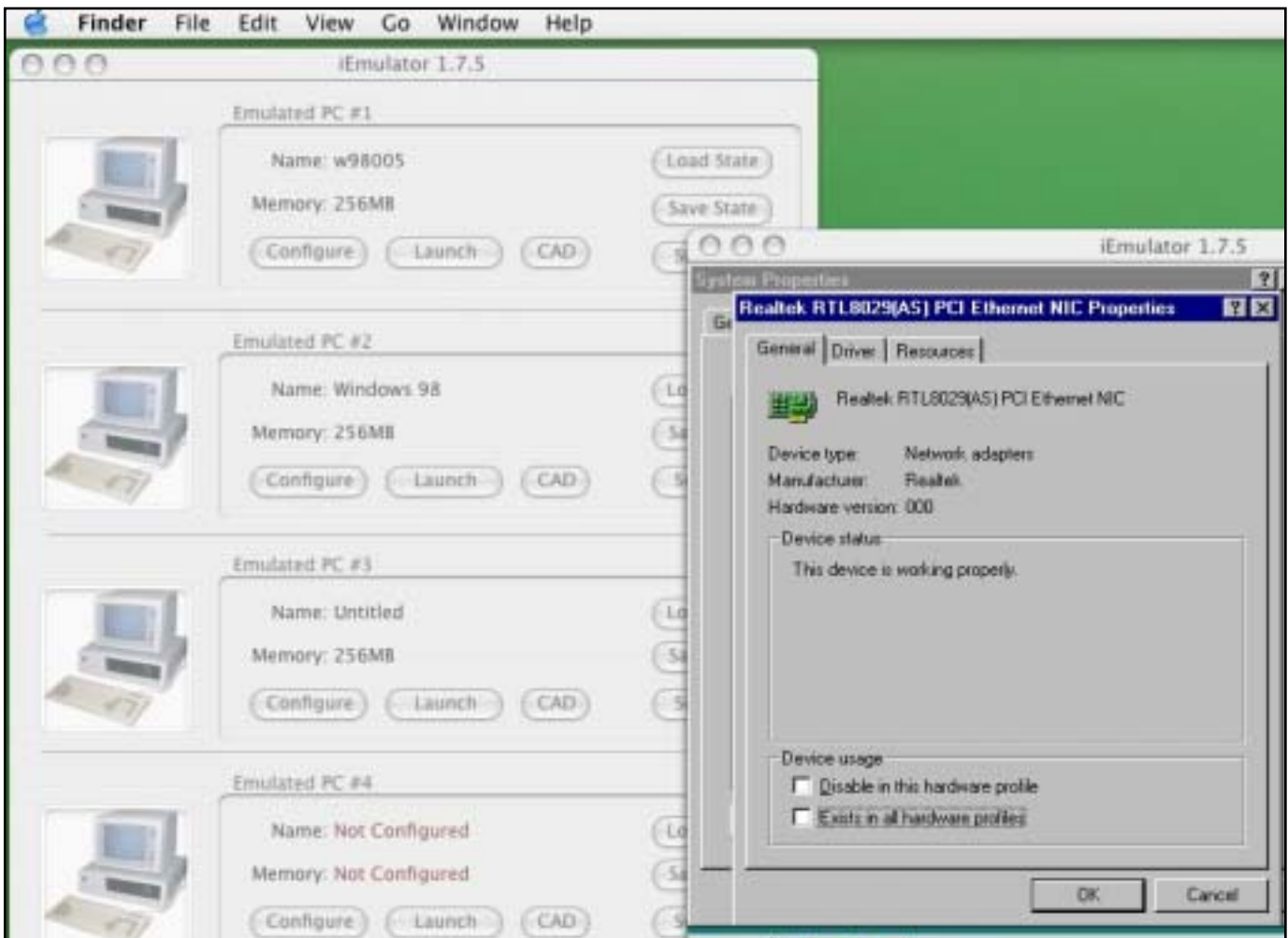


Figure 3: Mac Desktop Windows98 network interface card (NIC) Properties.

[Letters to "Late Nite"](#) continued from page 12

**Q05V.4:** What are the rules for creating passwords in the NASA guidelines?

**A0:** Actually, the NPG 2810.1 document describes more about what NOT to do than about what to do:

- Passwords must be eight or more characters long
- The eight characters must contain at least one character each from at least three of these four sets of characters: uppercase letters, lowercase letters, numbers, special characters
- Passwords must be non-trivial, which means passwords must meet these criteria:
  - ♦ The password is not equal to the user ID
  - ♦ The password is not a word found in a dictionary of any language or a dictionary word with numbers appended or prepended to it
  - ♦ The password is not the name of a vendor product or a nickname for a product
  - ♦ The password is not either wholly or predominantly composed of the following:
    - The user's ID, owner's name, birth date, Social Security Number, family member or pet names, names spelled backwards, or other personal information about the user
    - Any contractor name (company name)
    - The company division or department name
    - Repetitive sequences or keyboard patterns (e.g., "abc#abc#", "1234", "qwer", "mnbvc", or "aaa#aaa")
    - The name of any automobile or sports team

**Q05V.5:** That's quite a list of what NOT to do. Is there any constructive advice in the NASA guidelines?

**A0:** The Marshall Space Flight Center (MSFC) web page ([https://pracaprod.msfc.nasa.gov/praca/review/public/html/password\\_requirements.htm](https://pracaprod.msfc.nasa.gov/praca/review/public/html/password_requirements.htm)) gives some words of advice:

- You'd be amazed at what's in the dictionary.
- Long passwords are more likely to pass muster than short ones.
- If you're having trouble, try putting two short words together and sprinkling in some numbers or punctuation.
- Gibberish works best, especially if you can think of a way to pronounce it! ("FU:di\$h0" = "foo-dish-oh").

**Q05V.6:** What is meant by "special characters"?

**A0:** Special characters are all those characters that aren't letters or numbers, such as punctuation, parentheses, brackets, apostrophe, and the characters "@ # \$ % & \* + = /", etc.

Actually, there are more special characters on the keyboard (33) than there are letters of the alphabet.

**Q05V.7:** What are some examples of acceptable passwords?

**A0:** The Marshall Space Flight Center (MSFC) web page gives some examples of valid passwords, except Do NOT use these examples for your password! The fact that they are shown here as examples makes them unacceptable!

- dOg&3Bob1
- zLaGtiG3
- 45IoKk67
- GreP.090CaT
- nAaNy\*Took#1

**Q05V.8:** Those examples look awful! How can I come up with strong passwords that I stand a chance of remembering?

**A0:** Look closely at the criteria; can you guess what common entities satisfy all the requirements? I can think of at least three:

(1) a street address, e.g.:

- 77Mass.Ave.
- 1600Penna.Ave.
- 51MonroeSt. (note that "MonroeSt" is not a word in a dictionary)

But don't use your home address, or the address of your employer or work site.

(2) a citation of a Bible verse, e.g.:

- 1Kgs3:6-9
- Mk4:37-41
- (Gal6:9)
- Rv 6:2-8

(3) equipment model numbers, e.g.:

- HP-C2890A
- HP-51626a
- NEC/C500

**Q05V.9:** Is there an easy way to create a strong password?

**A0:** The easiest way is to use a program like Neal Grotenstein's Password Generator web page (at [www.toad.net/cgi-bin/cgiwrap/spwgroup/lc.pl](http://www.toad.net/cgi-bin/cgiwrap/spwgroup/lc.pl)). It gives you a set of 15 random passwords to choose from, or you can mix and match parts of them, and you could add your own special characters at the ends or in the middle.

**Q05V.10:** Those still look difficult to try to remember. Are there any ways to generate acceptable passwords that are easy to remember?

continued on page 24

up and goes to the next plan. Let's try to install Windows XP Professional.

And over three hours later, I finally arrived at the desktop for XP. I was still not able to access the Internet so I figured that maybe it was because I had not installed Service Pack 2 (SP2). And then I discovered that I had only configured the hard disk with two gigabytes of space. There was not enough free space on the C drive to install SP2; I forgot about the swap file requiring 768 Megabytes of disk space. I didn't have the patience to go through all this again so I gave up after looking at the screen (Figure 4) for almost an hour.



Figure 4: Mac Desktop running WinXP Pro (forever)

Bottom Line: I do not recommend the iEmulator software for the timid at heart or those without a lot of patience. If a non-Windows person such as a Mac diehard went for this cheap product, they would be really disappointed as well as fully aggravated. If a Mac Head wanted to run Windows products, I very highly recommend Microsoft's Virtual PC for the Mac. At almost \$100 difference in price, you get what you pay for.

*Rich Schinnell is a long time Windows person, and member of the Capital PC User Group, who cut his teeth on DOS back in 1982 and struggled through the windows evolutions from 1.0 up through Windows XP. He bought a Mac-Mini and has really enjoyed using it. That is his personal recommendation for Windows people who are interested in trying out the Macintosh. (He also became a member of Washington Apple Pi.) He can be reached at [schinnel@cpcug.org](mailto:schinnel@cpcug.org) or Mac people can contact him at [richnrockville@mac.com](mailto:richnrockville@mac.com), or as a last resort at 301-949-9292.*

**A0:** One way to do this is to use the sequence formed by the first letters of the words of a phrase that's easy to remember, for example:

- **Bmu,S-tnildh!** = Beam me up, Scotty - there's no intelligent life down here!
- **W'tnritmtsts** = Whether 'tis nobler in the mind to suffer the slings
- **Tsbtsip-atsiph** = They shall beat their swords into plowshares - and their spears into pruning hooks
- **Tqbfj0tld** = The quick brown fox jumps over the lazy dog

(Sometimes it's hard to work numbers into phrases like these, but you can always just substitute zero for the letter "o" somewhere, or number "1" for letter "I" or lower case "L", etc.)

**Q05V.11:** Do you have any other suggestions?

**A0:** I'd avoid <tab> and avoid all other ASCII characters not on keyboard (like "BEL" = CTL-G or "form feed" = CTL-L). Also avoid <backspace> = CTL-H. The character <blank> should be acceptable, but it could be problematic, as could be the single quote, double quote, accent, and back-slash (""). They are sometimes interpreted as an escape character.

That still leaves 28 other special characters.

**Q05V.12:** Does the AARP site have other useful and informative articles?

**A0:** Another interesting article at the AARP site is "Bringing Home Baby — Getting Started with a New PC" by Gabe Goldberg, about tasks to perform before using a new PC. It's at [www.aarp.org/learn\\_tech/computers/howto/Articles/item\\_858941980.html](http://www.aarp.org/learn_tech/computers/howto/Articles/item_858941980.html) (this URL and others about computers at the AARP site can be reached through the URL [www.aarp.org/learn\\_tech/computers/](http://www.aarp.org/learn_tech/computers/)) [Ed. Note: The article is also reprinted in this issue of the Monitor, starting on page 11.]

**Q05V.13:** Is there a web site with translations of latin expressions?

**A0:** The site [www.answers.com/topic/list-of-latin-phrases](http://www.answers.com/topic/list-of-latin-phrases) has translations of obscure Latin expressions, such as "de gustibus non est disputandum" (which means "there is no disputing about tastes" according to that site).

*Marty Shinko has been involved with CPCUG since the early 1990s, as a volunteer instructor and advocate for beginners. He's used computers for over three decades, from PC's to supercomputers. He can be reached via e-mail at [mshinko.cpcug@juno.com](mailto:mshinko.cpcug@juno.com) or via phone at (301) 253-1743, or in person at the "Late Nite" sessions that follow the General Meeting Tech Talks.*



# Special Interest Groups (SIGs)

*The Capital PC User Group has Special Interest Groups (SIGs) that meet throughout the Washington, DC, metro area. By attending SIG meetings, you can learn a computer-related subject of your choosing, continue to learn after mastering the basics, share your knowledge with others, and gather with peers in social/networking environments.*

## Access (Microsoft)

- Monthly, third Wednesday, 7:00PM
- Veterans Affairs Medical Center (adjacent to the Washington Hospital Center), 50 Irving Street, NW, Washington, DC (use Emergency Room Entrance), 4th floor, IRM Room, 4C106a
- URL—[www.cpcug.org/user/access/](http://www.cpcug.org/user/access/)
- E-mail announcement list: [accesssig-l](mailto:accesssig-l@cpcug.org) hosted at [cpcug.org](http://cpcug.org)
- E-mail discussion list: [accesssigd-l](mailto:accesssigd-l@cpcug.org) hosted at [cpcug.org](http://cpcug.org)
- Contact—David Kiasi, d: 301-350-4752, [David.Kiasi@appalt.com](mailto:David.Kiasi@appalt.com)

Sign up for our meeting announcement and vibrant discussion lists where you can get insight and suggestions for solving your Access problems.

## Act!

- 1st Sunday of every month 3:00-5:00PM
- **Note Location:** Harbour Square Cooperative Library, 500 N St, SW, Washington, DC
- Contact—Rick Shaddock [Rick@CICorp.com](mailto:Rick@CICorp.com), 703-486-2222

ACT! SIG meetings are a place for users to discuss and share their use of ACT! and to ask and answer questions of other ACT! users at all levels of expertise.

Our meetings are designed to give ACT! users the opportunity to learn more about using specific features of ACT! and the many products that seamlessly integrate with ACT!, and to meet other ACT! users in the Washington, DC, area. We will be performing demos of new versions of ACT!, offering solutions to technical support issues, and suggesting tips to increase user productivity.

Our SIG creates a forum to learn from other ACT! users and industry specialists, encourages the exchange of ideas about ACT!, and creates an opportunity to keep abreast of the latest business solution developments.

## Beginners (and Beyond)

- Usually monthly, at "Late Nite" following General Meetings/TechTalks, usually second Monday, 9:00PM
- Same location or meeting room as the General Meeting
- URL—[www.cpcug.org/user/beginner/](http://www.cpcug.org/user/beginner/)
- E-mail announcement list: [beginsig-l](mailto:beginsig-l@cpcug.org) hosted at [cpcug.org](http://cpcug.org)
- E-mail discussion list: [beginsigd-l](mailto:beginsigd-l@cpcug.org) hosted at [cpcug.org](http://cpcug.org)
- Contact—Marty Shinko, d/e/w: 301-253-1743 or [mshinko.cpcug@juno.com](mailto:mshinko.cpcug@juno.com)

Marty Shinko is coordinating the Beginners (and Beyond) SIG for computer beginners and intermediates. He'd also be interested in hearing from those who work with beginners.

Not exactly a beginner, but also not an expert? This SIG may be just what you've been looking for, a place for those no longer beginners to continue to learn how to get more out of their computers. And as computers evolve, the issues facing beginning computer users change.

Join us for fun, lively discussion, and computer talk. Experts are welcome to share their insights as well, of course.

## How You Can Help

Serve as a:

- Primary contact person
- Alternate contact person
- Representative to attend CPCUG Board of Directors meetings
- Contact person at General Meetings
- Reporter to write SIG update reports for *Monitor*
- Moderator for e-mail discussion lists

To help in any of these or other capacities, contact Marty by calling 301-253-1743, sending him a message via e-mail at [mshinko.cpcug@juno.com](mailto:mshinko.cpcug@juno.com), or meeting him during Late Nite following most General Meetings.

## Clipper

- Monthly, second Tuesday, 7:00PM
- Meets at different local restaurants—subscribe to the Clipper e-mail

announcement list to learn current month's location

- E-mail meeting announcements, monthly: To subscribe, send an e-mail request to SIG Chair Naseem Saab at [Naseem\\_Saab@DPS-Consulting.com](mailto:Naseem_Saab@DPS-Consulting.com)
- [www.DPS-Consulting.com/Clipper](http://www.DPS-Consulting.com/Clipper)
- Contact—Naseem Saab, 703-713-6900, [Naseem\\_Saab@DPS-Consulting.com](mailto:Naseem_Saab@DPS-Consulting.com)

The Washington Area Clipper Users Group (WACUG) became the Clipper SIG of the Capital PC User Group. The mission of the Clipper SIG is (1) to form a presence for Clipper programmers/consultants in the Washington, DC, area, (2) to help newcomers to the Clipper world appreciate and learn about the power of the language. If you need a Clipper programmer/consultant, we maintain a list of Clipper SIG members specializing in Clipper and Clipper-to-Windows conversions. Send an e-mail with the job description and requirements to Naseem Saab at [Naseem\\_Saab@DPS-Consulting.com](mailto:Naseem_Saab@DPS-Consulting.com) for distribution to the mailing list.

## Delphi

- Monthly, first Wednesday, 7:00PM (except no meeting in January and July)
- Inter-American Development Bank, 1350 New York Ave, Washington, DC
- Luncheon meeting—usually third Thursday, 11:30AM (Pentagon City Mall near movie theatres)
- URL—[www.cpcug.org/user/delphi/](http://www.cpcug.org/user/delphi/)
- E-mail announcement list: [delphisig-l](mailto:delphisig-l@cpcug.org) hosted at [cpcug.org](http://cpcug.org)
- E-mail discussion list: [delphisigd-l](mailto:delphisigd-l@cpcug.org) hosted at [cpcug.org](http://cpcug.org)
- Contact—Thomas Miller 703-503-5600, [tmiller@bss-software.com](mailto:tmiller@bss-software.com)

## Meeting Notes

If you know of other Delphi developers, please let them know about our meetings. We have presentations, technical discussions, contests, door prizes, leads, and fun.

---

## Digital Video

- Monthly (except July, August, and December), third Tuesday, 7:30PM
- usually Bethesda Chevy Chase Services Center (BCCSC), 2nd floor Multipurpose Room. *Check the Web site for verification.*
- URL—[www.dvug.org](http://www.dvug.org)
- Contact—Merrill M. Hessel, 301-840-1258, [dvug@meral.com](mailto:dvug@meral.com)

### Typical Agenda

7:30PM	SIG Business
7:40	Demo
8:00	Presentation
8:25	Video clips
9:00	Adjourn

Digital Camcorders are more popular than ever, but what do you do once you have taken the video? Put it into your computer and massage it, add titles, add music, and then improve your technique!

The Digital Video SIG of the Capital PC User Group (also known as the Digital Video User Group, DVUG) has an exciting program and opportunities for those interested in video. The group focuses on all aspects of the revolution in the production of digital videos, such as:

- Digital nonlinear editing system set-up and use
- Digital cameras
- Digital color correction
- Digital video authoring of DVDs
- Special effects and use of such software packages as Adobe After Effects
- Digital sound editing, sweetening, filtering of hum and extraneous noises, and other effects
- Digital lighting
- 3D effects

### Upcoming Meeting

**Tuesday, May 17, 7:30 pm**  
**Bethesda-Chevy Chase Services Center**

David Rubenstein, an award-winning local composer, will discuss "Composing Music for Video." David is an extremely prolific composer, which you can see by visiting his Web site at [users.erols.com/druben](http://users.erols.com/druben). He will bring his music keyboard and synthesizer to the meeting and show us how he uses his computer and particular software to compose music. He will demonstrate how sounds are produced and edited using a Midi controller and sequencer, and how a score is built up and synchronized to a video.

### Meeting Agenda:

7:30 pm	DVUG Business
7:35	David Rubenstein: "Composing

Music for Video"

8:45 Questions, General Discussion

9:00 Meeting Ends

\*\*\*\*\*

For directions to the meeting site at the Bethesda Services Center, see the web site, [www.dvug.org](http://www.dvug.org). Good parking is located one block from the metro station.

Please Note: If Montgomery County Schools close because of weather or other conditions, the meeting will be cancelled.

Check the Web site, [www.dvug.org](http://www.dvug.org), for information on the next meetings and directions. For any questions, or to be added to the e-mail list, send a message to Merrill Hessel at [dvug@meral.com](mailto:dvug@meral.com).

---

## Entrepreneurs and Consultants

- Monthly free meetings, *usually* third Saturday, 1:00PM
- Occasional workshop "extras" (varying fees)
- usually *Cleveland Park Library*, 3310 Connecticut Ave, NW, Washington, DC
- URL—[www.cpcug.org/user/entrepreneur/](http://www.cpcug.org/user/entrepreneur/)
- E-mail discussion list: *conent-1* hosted at [cpcug.org](http://cpcug.org)
- Contacts—Barbara Conn, d: 202-508-1494, e/w: 202-452-7428, [bconn@cpcug.org](mailto:bconn@cpcug.org); Marie Pinho, 703-569-6080, [mpinho@cox.net](mailto:mpinho@cox.net)

### Typical Agenda

1:00	Welcome
1:05	Accounting Tips/Tax Updates, Jina Etienne, <i>CPA</i>
1:15	<b>Main Presentation</b>
2:40	Q&A
2:55	Closing announcements
3:00	Door Prize Drawing (when available)
3:00	Informal queries, conversation, networking

### Meeting Notes

The Entrepreneurs and Consultants SIG is for computer consultants and entrepreneurs using computers. Our monthly meeting presentation topics are varied, and we welcome everyone. Attendees include business owners, independent computer consultants, managers of entrepreneurial entities within larger companies, new graduates, career changers, and those transitioning from a one-person consultancy to a business with full-time employees.

For the most up-to-date information about the activities of our SIG, including any meeting date, time, location, and topic changes, please subscribe to our *conent-1* LISTSERV list at: [www.cpcug.org/cgi-bin/wa](http://www.cpcug.org/cgi-bin/wa).

At many meetings there are handouts. To ensure we have handouts for all attendees, please register for each meeting via our Web form: [www.cpcug.org/user/entrepreneur/meet-reg.html](http://www.cpcug.org/user/entrepreneur/meet-reg.html).

### Upcoming Meeting

Saturday, May 21, 2005, 1:00-3:15 pm

Talk by Daniel H. Pink, author of ***A Whole New Mind: Moving From the Information Age to the Conceptual Age***, also author of ***Free Agent Nation***.

Lawyers. Accountants. Radiologists. Software engineers. That's what our parents encouraged us to become when we grew up. But mom and dad were wrong. The future belongs to a very different kind of person with a very different kind of mind. The era of "left brain" dominance, and the Information Age that it engendered, are giving way to a new world in which "right brain" qualities — inventiveness, empathy, and meaning — predominate. That's the argument at the center of this provocative and original book, which uses the two sides of our brains as a metaphor for understanding the contours of our times. ***A Whole New Mind*** reveals the six essential aptitudes on which professional success and personal fulfillment now depend, and includes a series of hands-on exercises culled from experts around the world to help readers sharpen necessary abilities. This book will change not only how we see the world but also how we experience it.

Speaker: Daniel H. Pink is the author of ***A Whole New Mind***, the groundbreaking guide to surviving, thriving, and finding meaning in an outsourced, automated, upside down world. His first book, ***Free Agent Nation***, about the growing ranks of people who work for themselves, was a nonfiction bestseller (***The Washington Post***) and a business bestseller in the United States, Canada, and Japan. Dan is a contributing editor at ***Wired***, and his articles on business and technology have also appeared in ***The New York Times***, ***Harvard Business Review***, and ***Fast Company***. In addition, Dan has provided analysis on dozens of television and radio broadcasts, including CNBC's "Power Lunch," ABC's "World News Tonight," NPR's "Morning Edition," and American Public Media's "Marketplace." As an independent business consultant, Dan Pink has advised start-up ventures and Fortune 100 companies on recruiting, business trends, and work practices. He held his last real job in the White House, where he served from 1995 to 1997 as chief speechwriter to Vice President Al Gore. He has also worked as an aide to U.S. Secretary of Labor Robert B. Reich, an economic policy staffer in the U.S. Senate, a legal researcher in India, and a

latrine builder in Botswana. Dan Pink received a B.A. with honors in linguistics from Northwestern University, where he was elected to Phi Beta Kappa, and a J.D. from Yale Law School. To his lasting joy, he has never practiced law. Dan lives in Washington, DC, with his wife and their three young children.

## Future Meetings

If you have an idea for a topic or speaker, please send an e-mail message about it to [bconn@cpcug.org](mailto:bconn@cpcug.org).

---

## GLITCH DC

GLITCH DC SIG (Gay and Lesbian Information Technologists of Washington DC, Inc.). Diverse group of men and women of all ages, all fields, from main frame programmers to novice users.

- Meets second Sunday of each month for brunch and technical presentation, 11:00AM
- Dupont Italian Kitchen, upstairs dining room, 17th and R Streets, NW
- Special events announced via mailing list at [glitchdc-announce@yahooogroups.com](mailto:glitchdc-announce@yahooogroups.com)
- Contact: Wallace Dickson, 202-265-0591, [wdickson@wdn.com](mailto:wdickson@wdn.com), or Cliff Bailey, 703-237-7486, [cbailey@myexcel.com](mailto:cbailey@myexcel.com)
- URL—[www.glitchdc.org](http://www.glitchdc.org)
- Jobs are listed via mailing list at [glitchdc-jobs@yahooogroups.com](mailto:glitchdc-jobs@yahooogroups.com)

---

## Investment

- Monthly (except August), third Wednesday, 7:30PM
- Bethesda Library, 7400 Arlington Road, Bethesda, MD
- URL—[www.cpcug.org/user/invest/](http://www.cpcug.org/user/invest/)
- E-mail meeting notices, monthly: To receive, send your e-mail request to [skatz@highstream.net](mailto:skatz@highstream.net) with your name and e-mail address.
- Contacts—Andy Thompson, [Thompson01@erols.com](mailto:Thompson01@erols.com) or e/w at 301-270-6790. For information on Investor's FastTrack mutual fund and stock data base and software sessions, contact Ferd Hassler 301-718-6253 or Carl Berninger at [cberninger@mindspring.com](mailto:cberninger@mindspring.com).

General meeting program schedule:

7:30 pm FastTrack session

8:15 pm Q & A session; Investment SIG business

8:30 pm Main presenter

9:30 pm 'Market Watch' (if no outside speaker)

Our meetings have two components. Each meeting begins with a 45-minute discussion related to FastTrack software,

which is widely used for analyzing and tracking mutual funds and individual stocks. At 8:15 pm the Investment SIG formally begins and our typical agenda consists of an initial 10-15 minutes of questions, answers, SIG business, and CPCUG concerns. Then we have a main presentation(s) lasting 60-90 minutes addressing issues related to fundamental or technical analysis of stocks, mutual funds, bonds, or trading methods such as options and market timing. The topic of technical analysis indicators is frequently visited.

After the main presentation, if the speaker is from outside the group, there is a 'Market Watch' discussion by our members. The meetings are free and open to the public.

We also have a library for our members. If you have any suggestions for future Investment SIG meeting topics, or if you have something ('non-commercial') you would like to present at a meeting, please e-mail Andy Thompson.

## Upcoming Meeting

**Wednesday, May 20, 7:30 pm**  
**Bethesda Library, 7400 Arlington Road, Bethesda, MD**

For directions go to:  
[www.montgomerylibrary.org/apps/libraries/BranchInfo/be.asp](http://www.montgomerylibrary.org/apps/libraries/BranchInfo/be.asp)

---

## Microsoft Office

- Usually monthly, fourth Wednesday (except November and December), 7:00PM
- American Speech-Language-Hearing Association (ASHA) at 10801 Rockville Pike, Rockville, MD
- URL—[www.cpcug.org/user/comm/sig-supp.html#office](http://www.cpcug.org/user/comm/sig-supp.html#office)
- Contact—Marie Parker, d: 301-897-5700 X4220, [Mparker@ASHA.org](mailto:Mparker@ASHA.org)

If you are interested in joining a group where you can exchange ideas, get answers to your questions and concerns, and increase your knowledge of Word, PowerPoint, and Excel, and the integration of these three applications, then this SIG is for you.

---

## PalmOS

- Monthly, day varies, 6:30PM
- Usually at American Psychological Association, 750 First Street, NE, 6th floor, Executive Office Suite, Washington, DC
- URL—[www.interpug.com/dcpug/](http://www.interpug.com/dcpug/)
- Contact — Frank Sokolove, [frank\\_sokolove@yahoo.com](mailto:frank_sokolove@yahoo.com).

---

## Pocket PC

- For date, time, and location, send e-mail to Ray Wiley (see below)
- URL—[www.cpcug.org/user/pocketpc](http://www.cpcug.org/user/pocketpc)
- E-mail announcement list: [pocketpc-1hosted@cpcug.org](mailto:pocketpc-1hosted@cpcug.org)
- E-mail discussion list: [pocketpcd-1hosted@cpcug.org](mailto:pocketpcd-1hosted@cpcug.org)
- Contact-Ray Wiley, d: 703-682-5325 or [rainman@gokatgo.net](mailto:rainman@gokatgo.net)

The Washington Area Pocket PC Users Group, a Special Interest Group of the Capital PC User Group, meets to discuss topics relating to the Pocket PC platform. If you're interested in learning how a Pocket PC can help you at work and play, please join us at our next meeting. Current Palm users are highly encouraged to attend!

---

## Robotics

- Usually the 3rd Thursday of each month
- Time: 6:30-10 PM: 6:30-7:30 SIG admin, 7:30-8:30 presentation, 8:30-10 workshop
- Location: Pangborn Hall, Room 303, Catholic University of America 620 Michigan Avenue, NE, Washington DC 20064
- Contact—Janet Lathan, 240-393-1464, [janetlathan@comcast.net](mailto:janetlathan@comcast.net); Ann Dorsey, 240-888-8295, [a.dorsey@cpcug.org](mailto:a.dorsey@cpcug.org)

Directions:

[admissions.cua.edu/visit/map.cfm](http://admissions.cua.edu/visit/map.cfm)

[welcome.cua.edu/maps.cfm](http://welcome.cua.edu/maps.cfm)

[tour.cua.edu/default4.cfm?Building\\_Id=39](http://tour.cua.edu/default4.cfm?Building_Id=39)

The purpose of the CPCUG Robotics SIG is to sponsor activities on robotics for CPCUG and its communities.

Activities will include informational meetings, workshops, demonstrations, and competitions.

---

## Seniors

- Monthly, first Saturday, 10:00AM-NOON
- Bedford Court - 3701 International Drive Silver Spring, MD [Directions: Take Georgia Avenue north from Beltway to third traffic light past intersection with Connecticut Ave, and turn right on International Dr to the tall building two blocks east. We meet in the Activities Room on the ground floor.]
- E-mail discussion list: [seniorsigd-1hosted@cpcug.org](mailto:seniorsigd-1hosted@cpcug.org)
- Contact—Paul Shapiro, [paul.shapiro@gmail.com](mailto:paul.shapiro@gmail.com). When not online, he can be reached at 240-643-8729.

The Seniors Special Interest Group meetings are open to all. They help attendees get more from their personal computers. We'd like member participation in arranging SIG programs, and need you to help get the word out about the Seniors SIG. The Seniors SIG is for everyone, from beginner to expert. CPCUG members and visitors are welcome and encouraged to attend our meetings whenever possible.

## CPCUG Member Benefit: Computer Magazines at Great Prices

	1 YR	2 YR	3 YR
Computer Games	\$10.95	\$20.95	\$29.95
Computer Gaming World	\$14.95	\$28.95	\$41.95
Computer Shopper	\$16.97	\$32.95	\$47.95
Dr. Dobbs Journal	\$15.95	\$30.95	----
Mac Addict	\$10.97	----	----
Mac Home Journal	\$15.97	\$29.97	----
Mac World	\$12.95	----	----
Maximum PC	\$ 9.95	\$18.95	\$27.95
Microsoft System Journal	\$21.95	\$39.95	----
PC Gamer	\$12.95	----	----
PC Magazine (22/44/66 issues)	\$25.97	\$48.95	\$68.95
PC World	\$16.95	----	----
Wired	\$ 6.00	\$12.00	\$17.00

Prices are for new subscriptions and renewals. All orders must be accompanied by a check or money order payable to Herb Goodman and mailed to: Herb Goodman  
8295 Sunlake Drive  
Boca Raton, FL 33496  
561-488-4465  
hgoodman@prodigy.net

Please allow 10 to 12 weeks for your magazines to start. For renewals, you must supply an address label from your present subscription to insure the correct start of your renewal. As an extra service you will be mailed a renewal notice about four months prior to the expiration date.

*In the last few years many computer magazine subscribers have used my services for the over 300 titles I carry, also at excellent prices. With almost everyone having email they have just emailed for a price and I send them the price also via email. - Herb*

## Statistics

- Monthly (except June through August), usually second Wednesday, 12:30PM
- 1800 M Street, NW, South Tower, Third Floor, Room S3031, Washington, DC—first-time attendees should contact Charlie Hallahan at [hallahan@ers.usda.gov](mailto:hallahan@ers.usda.gov) or 202-694-5051 to have their names put on the admittance list
- URL—[www.cpcug.org/user/sigstat/](http://www.cpcug.org/user/sigstat/)
- E-mail meeting announcements, monthly: To subscribe, send e-mail to Charles Hallahan, [hallahan@ers.usda.gov](mailto:hallahan@ers.usda.gov)
- Contact—Charles Hallahan, e/w: 703-532-2930, [hallahan@ers.usda.gov](mailto:hallahan@ers.usda.gov)

SIGSTAT is the Special Interest Group in Statistics for the CPCUG, the Capital PC User Group, and WINFORMS, the Washington Institute for Operations Research Service and Management

# Reboot

## CPCUG's Active Computer Recycling Program

10 Volunteers

Working 1 or 2 or more  
afternoons a month

Have hardware to donate?

Have a few hours a month and  
want to help?

101 Fleet Street  
Rockville, MD

Hours for donation drop-off:  
Mondays 2:00 – 6:00 PM  
Wednesdays 10:00 AM – 4:00 PM

Contacts:

Gerry Rosenkrantz  
[reboot20850@verizon.net](mailto:reboot20850@verizon.net)

Dave Barry  
[davbar20852@yahoo.com](mailto:davbar20852@yahoo.com)

Science.

All meetings are in Room S3031, 1800 M St, NW from 12:30 to 1:30. Enter the South Tower & take the elevator to the 3rd floor to check in at the guard's desk.

First-time attendees should contact Charlie Hallahan, 202-694-5051, [hallahan@ers.usda.gov](mailto:hallahan@ers.usda.gov), and leave their name. Directions to the building & many links of statistical interest can be found at the SIGSTAT Web site, [www.cpcug.org/user/sigstat/](http://www.cpcug.org/user/sigstat/).

## Upcoming Meeting

**Wednesday, May 11:** PROC QLIM - Qualitative and Limited Dependent Variable Models ([www.sas.com](http://www.sas.com))

The QLIM (Qualitative and Limited dependent variable Model) procedure analyzes univariate and multivariate limited dependent variable models where dependent variables take discrete values or dependent variables are observed only in a limited range of values. This procedure includes logit, probit, tobit, and general simultaneous equations models. The simultaneous equations model can contain discrete choice and limited endogenous variables as well as continuous endogenous variables. Charlie Hallahan will be the speaker.

## Our Web Pages

The SIGSTAT pages, at [www.cpcug.org/user/sigstat/](http://www.cpcug.org/user/sigstat/), contain an extensive set of links to Web pages of interest to statisticians. Each month we'll look at some sites relevant to that month's demo.

## Virginia

- Monthly, third Monday, 7:00PM
- Washington Gas, 6801 Industrial Road, Springfield, VA
- Jurisdiction for inclement weather cancellation: Fairfax County
- URL — [www.cpcug.org/user/vasig/](http://www.cpcug.org/user/vasig/)
- E-mail announcement list: [virginiasig-1](mailto:virginiasig-1@cpug.org) hosted at [cpug.org](http://cpug.org)
- Contacts—Luis Garcia, d: 202-606-9848, e/w: 703-425-6902, [lgarcia51@yahoo.com](mailto:lgarcia51@yahoo.com)

7:00PM Open Forum and General Information  
7:45 Presentation  
8:45 Q&A

## Meeting Notes

The main presentation can be on any general computer utilization issue: hardware, software, Internet, training, and so forth.

# HELPLINE

The CPCUG Helpline listing is for CPCUG members only. Volunteers provide assistance on listed subjects during the times and days outlined.

Membership has its privileges. Please be prepared to give the Helpline Volunteer your membership number. Please do not ask for

assistance outside the stated times. If you reach voice mail, leave a message — many people screen calls or otherwise prioritize their time. Some volunteers have provided e-mail addresses so that you can contact them if you have trouble getting in touch by phone.

If you would like to volunteer

your services in any area, please contact Henry Whitney, the Helpline Coordinator, at [helpline@cpcug.org](mailto:helpline@cpcug.org), providing your membership number, subject(s), phone number and/or e-mail address, with the days and times you're available.

Member	Phone	Days	Time	E-Mail
<b>ACCESS</b>				
ACCESS SIG Discussion List Scott Mohnkern	301-738-0097	M - F	9:00a-4:00p	<a href="http://www.cpcug.org/cgi-bin/wa">www.cpcug.org/cgi-bin/wa</a> scott@mohnkern.com
<b>ADOBE ACROBAT</b>				
Lisa Conners	301-527-0650	All	6:00p-10:00p	lamc8@comcast.net
<b>ADOBE INDESIGN</b>				
Lisa Conners	301-527-0650	All	6:00p-10:00p	lamc8@comcast.net
<b>ADOBE PHOTOSHOP</b>				
Sam Odio	888-282-2846	All	All	sam@odioworks.com
<b>ALPHA FOUR</b>				
Guy Durant	202-529-6744 202-529-6744	All	8:00a-11:00a 9:00p-11:59p	
<b>APL LANGUAGE</b>				
Frank Ditto	304-725-3283	All	12:01p-11:59p	fditto@shentel.net
<b>APPLE Macintosh (Hardware, Networks, OS, Software)</b>				
Phil Marchetti	301-404-2210	Mon-Sat	10:00a-7:00p	Phil@MarchettiAssociates.com
<b>ASSEMBLY LANGUAGE</b>				
Walter Nissen (Near Cleveland, OH)	440-243-4980	All	Reasonable	wnissen@tfn.net
<b>ASTRONOMY</b>				
Walter Nissen (Near Cleveland, OH)	440-243-4980	All	Reasonable	wnissen@tfn.net
<b>BASIC LANGUAGE</b>				
Walter Nissen (Near Cleveland, OH)	440-243-4980	All	Reasonable	wnissen@tfn.net
<b>BROTHER'S KEEPER</b>				
Alta Oben	703-938-5831 703-938-5831	Mon-Fri Sat-Sun	6:00p-10:00p 9:00a-10:00p	alta@cpcug.org
<b>BUILD YOUR OWN</b>				
Chip Dodge Sam Odio	703-425-7038 888-282-2846	All All	Reasonable All	 sam@odioworks.com
<b>BUYING DECISIONS</b>				
Sam Odio Robert Simanski	888-282-2846 703-404-8665	All All	All 6:00p - 10p	sam@odioworks.com rsimanski@yourpubpro.com
<b>C LANGUAGE</b>				
Wayne Dernoncourt Scott Graham	301-437-2745 301-593-2744 301-593-2744	Mon-Fri Mon-Fri Sat-Sun	9:00a- 6:00p 6:00p-9:00p Reasonable	wayned@cpcug.org sgraham@scobar.com
Walter Nissen (Near Cleveland, OH)	440-243-4980	All	Reasonable	wnissen@tfn.net

Member	Phone	Days	Time	E-Mail
<b>C++ LANGUAGE</b>				
Keith Bennett	301-840-1161	All	8:00a -9:00p	kbennett@cpcug.org
Scott Graham	301-437-2745	Mon-Fri	9:00a- 6:00p	sgraham@scobar.com
	301-593-2744	Mon-Fri	6:00p-9:00p	
	301-593-2744	Sat-Sun	Reasonable	
Walter Nissen (Near Cleveland, OH)	440-243-4980	All	Reasonable	wnissen@tfn.net
<b>COMMUNICATIONS - DATA/ MODEMS</b>				
Walter Nissen (Near Cleveland, OH)	440-243-4980	All	Reasonable	wnissen@tfn.net
<b>COMPUTING - GENERAL</b>				
Walter Nissen (Near Cleveland, OH)	440-243-4980	All	Reasonable	wnissen@tfn.net
Sam Odio	888-282-2846	All	All	sam@odioworks.com
Marty Shinko	301-253-1743	All	Reasonable	mshinko.cpcug@juno.com
<b>DBASE</b>				
Guy Durant	202-529-6744	All	8:00a-11:00a	
	202-529-6744	All	9:00p-11:59p	
<b>DELPHI/PASCAL</b>				
Richard Maley	301-840-1554	Mon-Fri	9:00a- 5:00p	75127.17@compuserve.com
Dennis Courtney	202-623-2884	Mon-Fri	9:00a- 5:00p	dennisc@iadb.org
<b>DOS</b>				
Walter Nissen (Near Cleveland, OH)	440-243-4980r	All	Reasonable	wnissen@tfn.net
Henry Winokur	301-320-2104	All	Reasonable	henwin@atlantech.net
<b>DOS Communications Packages</b>				
David Chessler	301-229-3984	All	7:00p-10:00p	
<b>EUDORA (3 and 4)</b>				
David Chessler	301-229-3984	All	7:00p-10:00p	
<b>EUDORA 5</b>				
Robert Simanski	703-404-8665	All	6:00p - 10p	rsimanski@yourpubpro.com
<b>EXCEL</b>				
Scott Mohnkern	301-738-0097	M - F	9:00a-4:00p	scott@mohnkern.com
Arquilla Ridgell	301-946-3041	Mon-Wed-Fri	7:00p-9:00p	clockone@aol.com
		Sat-Sun	6:00p -9:00p	clockone@aol.com
<b>FOXPRO</b>				
Guy Durant	202-529-6744	All	8:00a-11:00a	
	202-529-6744	All	9:00p-11:59p	
<b>GGEOWORKS</b>				
Herb Fredricksen	301-840-2056	All	2:00p-11:00p	
<b>HARDWARE - GENERAL</b>				
Wayne Dennoncourt				wayned@cpcug.org
Sam Odio	888-282-2846	All	All	sam@odioworks.com
Robert Simanski	703-404-8665	All	6:00p - 10p	rsimanski@yourpubpro.com
<b>HD TV/Home Theatre</b>				
Rodolfo La Maestra	703-690-6336	Mon-Sat	Reasonable	rodolfo.lamaestra@verizon.net
<b>HTML (Hypertext Markup Language)</b>				
HTML SIG Discussion List				<a href="http://www.cpcug.org/cgi-bin/wa">www.cpcug.org/cgi-bin/wa</a>
Harold Goldstein	301-854-0388	All	Reasonable	mdbiker@goldray.com
Walt Houser	301-299-0593	All	7:00p-10:00p	houserw@cpcug.org
Scott Mohnkern	301-738-0097	M-F	9:00a-4:00p	scott@mohnkern.com
Sam Odio	888-282-2846	All	All	sam@odioworks.com
<b>INTERNET - NOT CPCUG.ORG</b>				
Walter Nissen (Near Cleveland, OH)	440-243-4980	All	Reasonable	wnissen@tfn.net
<b>INTERNET - BASICS</b>				
Paul Shapiro	240-643-8729	All	9:00a-9:00p	paul.shapiro@gmail.com

Member	Phone	Days	Time	E-Mail
<b>INTERNET - CPCUG.ORG (cpcug.org subscribers only)</b>				
Scott Mohnkern	301-738-0097	M-F	9:00a-4:00p	scott@mohnkern.com
<b>INTERNET E-MAIL</b>				
David Chessler	301-229-3984	All	7:00p-10:00p	
<b>INTERNET EXPLORER</b>				
Walter Nissen (Near Cleveland, OH)	440-243-4980	All	Reasonable	wnissen@tfn.net
Robert Simanski	703-404-8665	All	6:00p - 10p	rsimanski@yourpubpro.com
<b>ISO-9000</b>				
Edward H. Jentsch	301-279-0134	All	Reasonable	ejentsch@cpcug.org
<b>JAVA (SUN)</b>				
Keith Bennett	301- 840-1161	All	8:00a -9:00p	kbennett@cpcug.org
<b>LAN (See also Networking)</b>				
Wayne Dernoncourt				wayned@cpcug.org
<b>LINUX</b>				
Cliff Bailey	703-237-4174	Mon-Fri	10:00a-8:00p	cbailey@myexcel.com
<b>LOTUS APPROACH</b>				
David Littlefield	202-723-9527	Mon-Fri	8:00a-10:00p	
<b>MATHCAD</b>				
Roland deWit	301-299-4697	Mo,Tu,We,Fr	7:00p-9:00p	
<b>MATHEMATICA</b>				
Roland deWit	301-299-4697	Mo,Tu,We,Fr	7:00p-9:00p	
<b>MEMORY MANAGEMENT</b>				
Henry Winokur	301-320-2104	All	Reasonable	henwin@atlantech.net
<b>MICROSOFT OFFICE</b>				
Scott Mohnkern	301-738-0097	M-F	9:00a-4:00p	scott@mohnkern.com
<b>MOZILLA</b>				
Cliff Bailey	703-237-4174	Mon-Fri	10:00a-8:00p	cbailey@myexcel.com
<b>NETSCAPE (3 and 4)</b>				
David Chessler	301-229-3984	All	7:00p-10:00p	
<b>NETSCAPE COMPOSER, Ver 4.01</b>				
David Littlefield	202-723-9527	Mon-Fri	6:00p-10:00p	
<b>NETWORKING/LAN</b>				
Sam Odio	888-282-2846	All	All	sam@odioworks.com
Robert Simanski	703-404-8665	All	6:00p - 10p	rsimanski@yourpubpro.com
<b>NOVICE (Beginner)</b>				
Walter Nissen (Near Cleveland, OH)	440-243-4980	All	Reasonable	wnissen@tfn.net
Sam Odio	888-282-2846	All	All	sam@odioworks.com
Marty Shinko	301-253-1743	All	Reasonable	mshinko.cpcug@juno.com
Robert Simanski	703-404-8665	All	6:00p - 10p	rsimanski@yourpubpro.com
Henry Winokur	301-320-2104	All	Reasonable	henwin@atlantech.net
<b>NUMBER THEORY</b>				
Walter Nissen (Near Cleveland, OH)	440-243-4980	All	Reasonable	wnissen@tfn.net
<b>OLX and other Off-line Readers</b>				
David Chessler	301-229-3984	All	7:00p-10:00p	
<b>OPENOFFICE</b>				
Cliff Bailey	703-237-4174	Mon-Fri	10:00a-8:00p	cbailey@myexcel.com
<b>ORACLE</b>				
Michael Shunfenthal	703-866-9729	Mon-Fri	7:30p-9:30p	
<b>OS/2</b>				
Keith Bennett	301-840-1161	All	8:00a -9:00p	kbennett@cpcug.org
C. Patrick Zilliacus	301-384-0972	Sat-Sun	12:01p-9:00p	

Member	Phone	Days	Time	E-Mail
<b>OUTLOOK</b>				
Scott Mohnkern	301-738-0097	M-F	9:00a-4:00p	scott@mohnkern.com
<b>PARADOX AND PAL FOR DOS</b>				
Ron Hicks	703-528-1009	All	Reasonable	ronhicks@cpcug.org
<b>PERSONAL EDITOR II</b>				
Walter Nissen (Near Cleveland, OH)	440-243-4980	All	Reasonable	wnissen@tfn.net
C. Patrick Zilliacus	301-384-0972	Sat-Sun	12:01p-9:00p	
<b>PKZIP</b>				
David Chessler	301-229-3984	All	7:00p-10:00p	
<b>PRINTERS - GENERAL</b>				
Henry Winokur	301-320-2104	All	Reasonable	henwin@atlantech.net
<b>PVCS VERSION MANAGER 5.2</b>				
Edward H. Jentsch	301-279-0134	All	Reasonable	ejentsch@cpcug.org
<b>QBASIC (IN MS-DOS)</b>				
Paul Shapiro	240-643-8729	All	9:00a-9:00p	paul.shapiro@gmail.com
<b>QUICK BASIC 4.5</b>				
Paul Shapiro	240-643-8729	All	9:00a-9:00p	paul.shapiro@gmail.com
<b>QUICKBOOKS</b>				
Dennis Courtney	301-570-9334	Mon-Fri	6:30p-9:00p	dennisc@cpcug.net
	202-623-2884	Mon-Fri	9:30a-5:30p	
<b>QUICKEN</b>				
Robert Simanski	703-404-8665	All	6:00p - 10p	rsimanski@yourpubpro.com
<b>SATELLITES, EARTH</b>				
Walter Nissen (Near Cleveland, OH)	440-243-4980	All	Reasonable	wnissen@tfn.net
<b>SMALLTALK</b>				
Cliff Bailey	703-237-4174	Mon-Fri	10:00a-8:00p	cbailey@myexcel.com
<b>SQL</b>				
Dennis Courtney	301-570-9334	Mon-Fri	7:00p-10:00p	
	202-623-2884	Mon-Fri	9:30a-5:30p	
<b>STUFFIT</b>				
David Chessler	301-229-3984	All	7:00p-10:00p	
<b>Timeslips (DOS and Windows)</b>				
David Chessler	301-229-3984	All	7:00p-10:00p	
<b>TROUBLESHOOTING - GENERAL</b>				
Wayne Dernoncourt				wayned@cpcug.org
Walter Nissen (Near Cleveland, OH)	440-243-4980	All	Reasonable	wnissen@tfn.net
Marty Shinko	301-253-1743	All	Reasonable	mshinko.cpcug@juno.com
Robert Simanski	703-404-8665	All	6:00p - 10p	rsimanski@yourpubpro.com
Henry Winokur	301-320-2104	All	Reasonable	henwin@atlantech.net
<b>UBASIC LANGUAGE</b>				
Walter Nissen (Near Cleveland, OH)	440-243-4980	All	Reasonable	wnissen@tfn.net
<b>UNIX</b>				
Scott Graham	301-437-2745	Mon-Fri	9:00a- 6:00p	sgraham@scobar.com
	301-593-2744	Mon-Fri	6:00p-9:00p	
	301-593-2744	Sat-Sun	Reasonable	
Scott Mohnkern	301-738-0097	M-F	9:00a-4:00p	scott@mohnkern.com
<b>UTILITIES</b>				
Walter Nissen (Near Cleveland, OH)	440-243-4980	All	Reasonable	wnissen@tfn.net
<b>VIDEO CONFERENCING</b>				
Paul Shapiro	240-643-8729	All	9:00a-9:00p	paul.shapiro@gmail.com

Member	Phone	Days	Time	E-Mail
<b>VMWARE</b>				
Cliff Bailey	703-237-4174	Mon-Fri	10:00a-8:00p	cbailey@myexcel.com
<b>WEB SEARCH ENGINES</b>				
Harold Goldstein	301-854-0388	All	Reasonable	mdbiker@goldray.com
<b>WINDOWS 3.1</b>				
Guy Durant	202-529-6744	All	8:00a-11:00a	
	202-529-6744	All	9:00p-11:59p	
Henry Winokur	301-320-2104	All	Reasonable	henwin@atlantech.net
<b>WINDOWS 95</b>				
David Chessler	301-229-3984	All	7:00p-10:00p	
Henry Winokur	301-320-2104	All	Reasonable	henwin@atlantech.net
<b>WINDOWS 98</b>				
Walter Nissen (Near Cleveland, OH)	440-243-4980	All	Reasonable	wnissen@tfn.net
Sam Odio	888-282-2846	All	All	sam@odioworks.com
Robert Simanski	703-404-8665	All	6:00p - 10p	rsimanski@yourpubpro.com
Henry Winokur	301-320-2104	All	Reasonable	henwin@atlantech.net
<b>WINDOWS ME</b>				
Henry Winokur	301-320-2104	All	Reasonable	henwin@atlantech.net
<b>WINDOWS NT - SYSTEM POLICY EDITOR</b>				
Ron Hicks	703-528-1009	All	Reasonable	ronhicks@cpcug.org
<b>WINDOWS 2000 PROFESSIONAL</b>				
Sam Odio	888-282-2846	All	All	sam@odioworks.com
<b>WINDOWS XP</b>				
Sam Odio	888-282-2846	All	All	sam@odioworks.com
Robert Simanski	703-404-8665	All	6:00p - 10p	rsimanski@yourpubpro.com
Henry Winokur	301-320-2104	All	Reasonable	henwin@atlantech.net
<b>WINFAX PRO</b>				
Howard Weeks	301-924-0400	Mon-Fri	2:00p - 6:00p	
<b>WORD</b>				
Edward H. Jentsch (ver 6.0/7.0)	301-279-0134	All	Reasonable	ejentsch@cpcug.org
Arquilla Ridgell	301-946-3041	Mo, We, Fr	7:00p-9:00p	Clockone@aol.com
	301-946-3041	Sat-Sun	6:00p-9:00p	Clockone@aol.com
Robert Simanski (*97-2003)	703-404-8665	All	6:00p - 10p	rsimanski@yourpubpro.com
Henry Winokur (ver 6.0/7.0, *97-2003)	301-320-2104	All	Reasonable	henwin@atlantech.net
<b>WORDPERFECT</b>				
WordPerfect SIG Discussion List				<a href="http://www.cpcug.org/cgi-bin/wa">www.cpcug.org/cgi-bin/wa</a>
Arquilla Ridgell	301-946-3041	Mo, We, Fr	7:00p-9:00p	clockone@aol.com
	301-946-3041	Sat-Sun	6:00p -9:00p	clockone@aol.com
<b>WORDPERFECT (5.1 &amp; 6.0 DOS)</b>				
Wayne Deroncourt				wayned@cpcug.org
<b>WORDPERFECT (DOS &amp; WINDOWS)</b>				
Howard Weeks	301-924-0400	Mon-Fri	2:00p- 6:00p	
<b>WORDPERFECT (DOS-ALL)</b>				
David Chessler	301-229-3984	All	7:00p-10:00p	
<b>WORDPERFECT (WINDOWS 7-9)</b>				
David Chessler	301-229-3984	All	7:00p-10:00p	
<b>WORLD WIDE WEB</b>				
Harold Goldstein	301-854-0388	All	Reasonable	mdbiker@goldray.com
Walt Houser	301-299-0593	All	7:00p - 10:00p	houser@cpcug.org
Scott Mohnkern	301-738-0097	M-F	9:00a-4:00p	scott@mohnkern.com

## O'Reilly Books Available for Review

Thanks to the generosity of O'Reilly & Associates, one of the leading publishers of computer and networking books, CPCUG is well stocked with titles.

We'll have books at meetings and make them available there or by other means to people who will make a commitment to review them for the *Monitor*.

We always need product and book reviewers — people who'll exercise a product or read a book carefully, then share thoughts with fellow members. Reviewing a product or book is a contribution that helps your fellow members, and it's what user groups are all about.

If you're interested — it's easy, fun, and you can get writing guidelines and editing help if you wish — contact [editor@cpcug.org](mailto:editor@cpcug.org).

### Directions to Washington Gas May 9 General Meeting TechTalk

The May CPCUG General Meeting TechTalk will be held at:

**Washington Gas**  
(usually in the large auditorium)  
6801 Industrial Road  
Springfield, VA 22150

#### Directions:

Industrial Road is in the Shirley Industrial Park. It meets Backlick Road between the Beltway and Edsall Road.

#### By auto from I-495 Beltway Inner Loop (North):

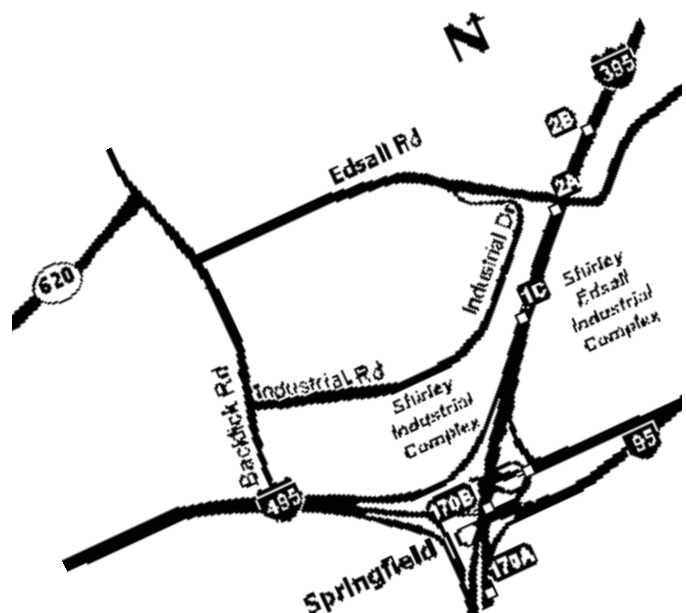
Take I-395 North.  
Continue with I-395 directions.

#### By auto from I-395:

Take Exit 2, Edsall Road (Route 648) West.  
Turn left at end of road onto Backlick Rd (Rt 617).  
After approx. .4 mile, turn left on Industrial Road at the traffic light.  
Enter the Washington Gas parking lot on the right after passing the sign with white lettering on black background, at the "Payment Depository" sign.

#### By auto from I-495 Beltway Outer Loop (South):

Take Exit 5, Braddock Road (Route 620) East.  
After approx. 1.8 miles, turn right on Backlick Road (Route 617).  
After approx. .7 mile, turn left on Industrial Road traffic light.  
Enter the Washington Gas parking lot on the right after passing the sign with white lettering on black background, at the "Payment Depository" sign.



Please see page 4 for details on  
upcoming General Meeting TechTalks.

# CPCUG E-Mail Lists



The Capital PC User Group maintains e-mail lists for distributing and sharing information. An e-mail list is a list of people's names and e-mail addresses used to simultaneously send messages or announcements to a group of

people who have a common topic of interest. Some lists are for information distribution only (no individual posting allowed); others are open for posting (discussion lists). Most list-owners maintain archives of messages. You can join and leave the list at any time, even sign off temporarily during vacation.

E-mail lists are a logical extension of bulletin board systems, like the late CPCUG Membership Information eXchange (MIX). They provide much the same functionality as the MIX did without requiring dialing into a separate message server. If you have access to the Internet and e-mail you can get started exploring mailing lists right away!

LISTSERV®, the registered trade name for the most popular and sophisticated e-mail list management software on the market, makes it easy for even the newest user to join these lists. Users can subscribe to or unsubscribe from any of the lists that are open to the public. To subscribe to a list, follow the instructions for sending an e-mail to LISERV as outlined in the box that follows this list.

For information about LISERV, you can retrieve manuals from:

[www.lsoft.com/resources/manuals.asp](http://www.lsoft.com/resources/manuals.asp)

Below is a compilation of some of the most popular of CPCUG's current e-mail lists.

- ACCESSSIG-L** (CPCUG Access SIG Announcement List)
- ACCESSSIGD-L** (CPCUG Access SIG Discussion List)
- BEGINSIG-L** (CPCUG Beginners SIG Announcement List)
- BEGINSIGD-L** (CPCUG Beginners SIG Discussion List)
- CONENT-L** (CPCUG Entrepreneurs and Consultants SIG Discussion List)
- CPCUGCAL-L** (CPCUG Event Calendar Distribution List)
- CPCUGGEN-L** (CPCUG General Discussion List)
- DCPUG-L** (CPCUG PalmOS SIG Discussion List)
- DELPHISIG-L** (CPCUG Delphi SIG Announcement List)
- HTMLSIG-L** (CPCUG HTML SIG Announcement List)
- HTMLSIGD-L** (CPCUG HTML SIG Discussion List)

- JAVASIG-L** (CPCUG Java SIG Announcement List)
- JAVASIGD-L** (CPCUG JAVA SIG Discussion List)
- MEMBER-TO-ISD** (CPCUG Member Internet Service Discussion List)
- MIX-L** (CPCUG Member Info. eXchange Discussion List)\*
- MMSIG-L** (CPCUG Multimedia SIG Announcement List)
- MMSIGD-L** (CPCUG Multimedia SIG Discussion List)
- MONITOR-L** (CPCUG *Monitor* Announcement List)
- NETSIG-L** (CPCUG Internet SIG News List)\*\*
- OFCSIG-L** (CPCUG MS-Office SIG Announcement List)
- PMSIG-L** (CPCUG Project Mgm't SIG Announcement List)
- POCKETPC-L** (CPCUG Pocket PC SIG Announcement List)
- POCKETPCD-L** (CPCUG Pocket PC SIG Discussion List)
- SCIFAIRD-L** (CPCUG Science Fair Discussion List)
- SENIORSIG-L** (CPCUG Seniors SIG Announcement List)
- SENIORSIGD-L** (CPCUG Seniors SIG Discussion List)
- TRAIN-L** (CPCUG Training Program Announcement List)
- TRAIND-L** (CPCUG Training Program Discussion List)
- VBSIG-L** (CPCUG Visual Basic SIG Announcement List)
- VBSIGD-L** (CPCUG Visual Basic SIG Discussion List)
- VIRGINIASIG-L** (CPCUG VA SIG Announcement List)
- WPSIG-L** (CPCUG WordPerfect SIG Announcement List)
- WPSIGD-L** (CPCUG WordPerfect SIG Discussion List)

\* MIX-L – CPCUG members only. Send e-mail to David Chessler <[chessler@cpcug.org](mailto:chessler@cpcug.org)> to subscribe.

\*\* NETSIG-L cannot be subscribed to or signed off from [cpcug.org](http://cpcug.org) as it is hosted on AOL. To subscribe to NETSIG-L mailings, send e-mail to: [LISTSERV@LISTSERV.AOL.COM](mailto:LISTSERV@LISTSERV.AOL.COM) containing the line:  
SUBSCRIBE NETSIG-L <firstname> <lastname>

*To subscribe to any list, send an e-mail message to [LISTSERV@CPCUG.ORG](mailto:LISTSERV@CPCUG.ORG). Include in the message the line: SUBSCRIBE <listname> <yourfirstname> <yourlastname>. (Do not include the angle brackets.) No entry in the subject line is necessary.*



*The software for maintaining the mailing lists, LISERV®, has been made available through a generous donation from L-Soft International, Inc.*

## 10 Reasons To Join CPCUG

Capital PC User Group (CPCUG) membership entitles each member of your family living in your household to all CPCUG membership benefits—

1. Helpline—a great way to get help from experts for your hardware, software, and Internet questions and problems at no additional cost. The Helpline Directory is updated and published in the *Monitor*, the magazine of the Capital PC User Group.

2. Mail delivery of a print copy of our award-winning magazine, the *Monitor*, with its practical tips for computer users; technical articles; regular columns; CPCUG-member-authored reviews of software, hardware, and computer-related books; CPCUG event calendar; and special interest group (SIG) and Training Program information.

3. Computer education and training classes, seminars, workshops, discussions, and labs at low member rates—some are even free to members while others are for members only.

4. Assistance from CPCUG Build Team mentors in specifying and building your own computer. CPCUG's popular "Build" Workshop gives participants the knowledge and confidence to select appropriate components to build and later upgrade their own computers without additional paid assistance. This workshop is only \$75 and is only available to CPCUG members.

5. Discounts on software, hardware, and training are periodically made available to members of our user group. [If you take advantage of several discounts available only to CPCUG members, your membership pays for itself.]

6. Internet service options available only to CPCUG members at competitive rates through our Internet domain [cpcug.org](http://cpcug.org).

7. Access to new member-only e-mail distribution lists being created to supplement our more than 30 public discussion and announcement lists. List subscribers can ask and get answers to computer hardware and software questions, and stay informed about CPCUG activities and Training.

8. New software and/or computer reference books—available without charge to members who review them for our magazine, the *Monitor*. You'll also get a byline in the *Monitor* and become a member of our product review coordinator's team.

9. Member-only door prizes—available at some General Meetings, some special interest group (SIG) meetings, and at occasional seminars. [This benefit has more than paid for the annual membership fee of many active CPCUG members. Software prizes have included Lotus Domino Go Webserver, MS Office Professional, and Adobe Photoshop. Hardware prizes have included Hewlett Packard Pocket PCs and Palm handhelds.]

10. Opportunities to develop and/or enhance leadership and management skills, while building your professional network, by volunteering with CPCUG.

The biggest benefit of all may be that by becoming active in the Capital PC User Group you become part of a very helpful community of computer users and IT professionals who are truly "Users Helping Users."

Before you know it you will also become a "User Helping Users."

The Capital PC User Group, Inc. (CPCUG), a nonprofit 501(c)(3) educational organization established in 1982, provides a forum for sharing information, experience, and resources among computer users, from novice to advanced. Although the group serves primarily the Washington, DC, metropolitan area, members are found around the world.

## Membership Form

**Mail to:** Capital PC User Group, Inc.  
19209 Mt. Airey Road  
Brookeville, MD 20833

**Call to** (if paying by credit card): (301) 762-9372  
**Fax to** (if paying by credit card): (301) 762-9375

Name \_\_\_\_\_

Address \_\_\_\_\_

City/State/ZIP \_\_\_\_\_

Telephone (Evening/Weekend) \_\_\_\_\_

Telephone (Day) \_\_\_\_\_

E-Mail Address \_\_\_\_\_

Member Number \_\_\_\_\_

New Membership     1 year—\$42     Outside the  
 Renewal             2 years—\$78        United States,  
 Change of Address    3 years—\$110      \$60 per year

Payment method:     Check     VISA     MasterCard

Card Number \_\_\_\_\_

Expiration Date \_\_\_\_\_

Signature (required for credit cards): \_\_\_\_\_

List my name in the next Membership Directory?     Yes     No  
Name and address information from this Membership Directory may be very occasionally made available to computer-related businesses, most often on a one-time basis to vendors desiring to announce their General Meeting presentations. If you do not wish to be included in the directory, mark the "No" box above.

Please check this box if you would *not* wish to receive a monthly e-mail message with current CPCUG training and meeting topics. We are considering using this means of keeping the membership informed of scheduled events and changes more rapidly than is possible via the *Monitor* magazine.

Your membership starts with the first *Monitor* magazine mailed to you. It may take 4–6 weeks before you are included on the mailing list or receive your membership card. Please be patient.

Five dollars of the membership fee is for a subscription to the *Monitor*.  
902w

### Capital PC User Group, Inc. *A Resource for Technology Users and IT Professionals*

**Phone:** (301) 762-9372

**Fax:** (301) 762-9375

**E-Mail:** [admin@cpcug.org](mailto:admin@cpcug.org)

**Snail Mail:** 19209 Mt. Airey Road  
Brookeville, MD 20833

**URL:** <http://www.cpcug.org/>

**President:** Dennis Courtney  
[president@cpcug.org](mailto:president@cpcug.org)

**Events Calendar:**

<http://www.cpcug.org/user/comm/cal-6mon.html>

## Business Card Advertising

Streaming provides Internet distribution of your home or company videos. They can be seen by your friends, family, colleagues, or the world. The Capital PC User Group has arranged a great bargain for members: For \$149 per year beyond the membership fee the CPCUG has arranged 350 MB of space for you to stream your videos in any or all of the major formats: Real Media, Windows Media, or Quicktime. Typical commercial rates are \$350 per year and above. If you are interested contact us at [dvug@meral.com](mailto:dvug@meral.com) and we will help you get started.

To advertise in this space,  
please contact  
the **Monitor** editor  
at  
[editor@cpcug.org](mailto:editor@cpcug.org)

## Support CPCUG!

Advertise Your Business Here

Let CPCUG members  
know about your services

Advertise here at reasonable rates

## CPCUG Meeting Site Abbreviations & Addresses

**1800 M** = 1800 M St., NW, South Tower, 3rd Floor, Room S3031, Wash., DC

**APA** = American Psychological Assn, 750 1st St., NE, 6th Floor, Executive Office Suite, Wash., DC

**ASHA** = American Speech-Language-Hearing Assn, 10801 Rockville Pike, Rockville, MD

**AUMC** = Annandale United Methodist Church (see UHU Annandale, VA)

**BCCSC** = Bethesda Chevy Chase Services Center, 4805 Edgemoor Lane, Bethesda, MD: 3 locations on the 2nd Floor: Rooms A & B; Room C; and Multipurpose Room

**Bedford** = Bedford Court, Activity Center, Senior Living Community, 3701 International Dr, Silver Spring, MD

**BLib** = Bethesda Library, 7400 Arlington Road, Bethesda, MD

**CESC** = Carver Educational Services Center, Auditorium, 850 Hungerford Dr., Rockville, MD

**CPL** = Cleveland Park Library, 3310 Connecticut Ave. NW, Large Mtg Rm, Washington, DC

**CU-P** = Catholic University of America, Pangborn Hall, Room 303, 620 Michigan Avenue, NE, Washington, DC

**DIK** = Dupont Italian Kitchen, upstairs dining room, 17th and R Streets NW Washington, DC.

**HH** = Harmony Hall Regional Center, 10701 Livingston Rd., Ft. Wash., MD

**HSCL** = Harbour Square Cooperative Library, 500 N St, SW, Washington, DC

**IADB** = Room B-300, Inter-American Development Bank, 1350 New York Ave., NW, Wash, DC

**IVL** = Interstate Van Lines (Community Room), 5801 Rolling Road, Springfield, VA

**KL** = Martin Luther King Jr. Library, 901 G St., NW, basement auditorium, Room A-5, Washington, DC

**MCT** = Montgomery Community Television, 7548 Standish Place, Rockville, MD

**MS** = Microsoft Corporation, 5335 Wisconsin Ave, NW, 5th floor, Washington, DC

**PC** = Pentagon City Mall Eatery

**Reboot** (computer recycling) = 101 Fleet St, Rockville, MD

**Teaism** = Teaism Restaurant, 400 8th St, NW, Wash., DC

**UHU** = Annandale United Methodist Church, Room 305, 6935 Columbia Pike, Annandale, VA

**VAMC** = Veterans Affairs Medical Center, 50 Irving St., NW, 4th Floor, IRM Room, 4C106a, Wash., DC

**WCC** = Washington, DC Convention Center, 801 Mt. Vernon Place, NW, Washington, DC

**WELib** = West End Library, 2nd Floor, Large Meeting Room, 1101 24th Str, NW, Washington, DC

**WGas** = Washington Gas, 6801 Industrial Rd., Springfield, VA

### Keep Updated!

Capital PC User Group meeting plans may change after the **Monitor** has gone to press. To get the latest information about meetings and special events (including topics, when available, and date, time, and location changes), bookmark and check [www.cpcug.org/user/comm/](http://www.cpcug.org/user/comm/).

# CPCUG Training

UHU Annandale, VA  
Annandale United Methodist Church (AUMC),  
Room 305  
6935 Columbia Pike, Annandale, VA 22003

**Please note new fee structure for courses:  
\$39 CPCUG & AUMC members, \$49 non-members.  
All classes now begin at 6:30 pm, except where noted.  
Register online at [www.cpcug.net/trainingsearch.asp](http://www.cpcug.net/trainingsearch.asp)  
or call CPCUG at 301-762-9372.**

## May

- 3 - Under the Hood
- 5 - Burning CD's With Roxio EZ CD Creator
- 5 - RemObjects SDK and Data Abstract Start Date (9 am)
- 10 - Introduction to Home Networking
- 12 - Basics of Computers for Beginners
- 17 - Introduction to MS Excel
- 19 - Job Hunting on the Internet
- 26 - Intermediate MS Excel

MCT Rockville, MD  
Montgomery Community Television (MCTS)  
Training Classroom  
7548 - 7550 Standish Place, Rockville, MD 20855

[For directions to this new training facility location,  
see page 16 of this issue.]

**Please note new fee structure for courses:  
\$49 CPCUG members, \$59 non-members. All classes  
now begin at 6:30 pm, except where noted. Register  
online at [www.cpcug.net/trainingsearch.asp](http://www.cpcug.net/trainingsearch.asp) or call  
CPCUG at 301-762-9372.**

## May

- 10 - Introduction to MS Word
- 13 - Saving Digital Video to the PC
- 17 - Personal Disaster - Recovery & Backup Techniques
- 20 - Introduction to Digital Video Editing on a PC
- 24 - Windows Maintenance & Computer Troubleshooting

Please check the CPCUG Web site, [www.cpcug.net/trainingsearch.asp](http://www.cpcug.net/trainingsearch.asp), for changes, and the June schedule.

---

**Capital PC User Group, Inc.**  
19209 Mt. Airey Road,  
Brookeville, MD 20833

Non-Profit  
**US Postage Paid**  
Suburban, MD  
Permit No. 1910

---

---

## Membership Benefits

1. Helpline for PC and Internet questions
2. Award-winning *Monitor* magazine
3. Economical classes at member rates
4. Mentors for computer specification/building
5. Discounts on software, hardware and training
6. Internet service options through [CPCUG.ORG](http://CPCUG.ORG)
7. Access to members-only e-mail lists
8. Free software and books for review writers
9. Valuable door prizes at some events
10. Opportunities to enhance leadership skills